

SERVICE & OPERATING MANUAL



Model S05 Non-Metallic Design Level 2

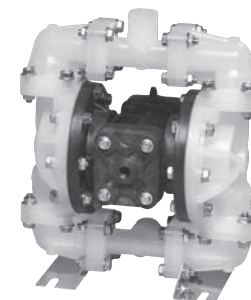
Table of Contents

Engineering Data and Temperature Limitations.....	1
Explanation of Pump Nomenclature.....	2
Performance Curve.....	3
Dimensions.....	4
Metric Dimensions.....	5
Principle of Pump Operation.....	6
Installation and Start-up	6
Air Supply	6
Air Valve Lubrication	6
Air Line Moisture.....	6
Air Inlet and Priming	6
Between Uses	6
Installation Guide.....	7
Troubleshooting	8
Warranty	8
Important Safety Information	9
Material Codes	10
Composite Repair Parts Drawing	12
Overlay Option Drawing, Muffler Option Drawing.....	12
Available Service and Conversion Kits	12
Composite Repair Parts List.....	13
Air Valve Assembly Drawing and Parts List	14
Air Valve Assembly Servicing	15
Air Valve with Stroke Indicator Assembly Drawing and Parts List.....	16
Air Valve with Stroke Indicator Assembly Servicing.....	17
Pilot Valve Servicing, Assembly Drawing, and Parts List.....	18



II 2GD T5

U.S. Patent #
400,210; 5,996,627;
6,241,487



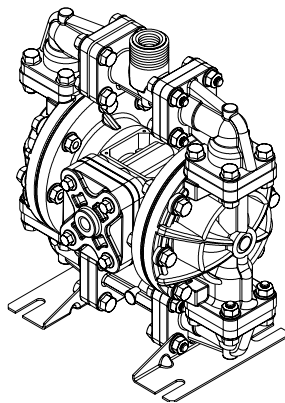
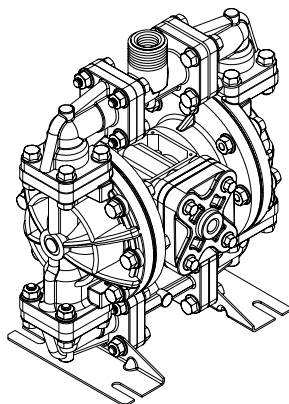
Solenoid Shifted Air Valve Drawing	19
Solenoid Shifted Air Valve Parts List	19
Solenoid Shifted Air Distribution Valve Option.....	20
Intermediate Assembly Drawing, Parts List and Servicing.....	21
Check Valve Drawing and Servicing.....	22
Diaphragm Service Drawing, Non-Overlay.....	23
Diaphragm Service Drawing, with Overlay	23
Diaphragm Servicing	24
Overlay Diaphragm Servicing	24
Dual Port Option Drawing	25
Dual Porting Options	26
Dual porting of both suction and discharge ends of the pump	26
Single porting of the suction and dual porting of the pump discharge	26
Dual porting of the suction and single porting of the pump discharge	26
Single Port Suction Repair Parts List	27
Single Port Discharge Repair Parts List	27
Dual Port Suction and Discharge Repair Parts List.....	27
Pumping Hazardous Liquids.....	28
Converting the pump for piping the exhaust air.....	28
Exhaust Conversion Drawing	28
Converted Exhaust Illustration.....	28
Pulse Output Kit Drawing	29
Pulse Output Kit Option	29
Muffler Options	30
Grounding The Pump	31
CE Declaration of Conformity	32

**WARREN
RUPP®**

Quality System
ISO9001 Certified

Environmental
Management System
ISO14001 Certified

IDEX
FLUID & METERING



U.S. Patent #
5,996,627; 6,241,487
Other U.S. Patents
Applied for



SANDPIPER®
A WARREN RUPP PUMP BRAND

S05 Non-Metallic Design Level 2 Ball Valve

**Air Operated
Double Diaphragm Pump**

ENGINEERING, PERFORMANCE
& CONSTRUCTION DATA

INTAKE/DISCHARGE PIPE SIZE 1/2" NPT(Internal) or 1/2" BSP (Tapered) 1" NPT(External) or 1" BSP (Tapered)	CAPACITY 0 to 14 gallons per minute (0 to 52 liters per minute)	AIR VALVE No-lube, no-stall design	SOLIDS-HANDLING Up to .125 in. (3mm)	HEADS UP TO 100 psi or 231 ft. of water (7 Kg/cm² or 70 meters)	DISPLACEMENT/STROKE .026 Gallon / .098 liter
⚠ CAUTION! Operating temperature limitations are as follows:					
MATERIALS				Operating Temperatures	
				Maximum	Minimum
Santoprene®: Injection molded thermoplastic elastomer with no fabric layer. Long mechanical flex life. Excellent abrasion resistance.				275°F 135°C	-40°F -40°C
Nylon				180°F 82°C	-35°F 0°C
Virgin PTFE: Chemically inert, virtually impervious. Very few chemicals are known to react chemically with PTFE: molten alkali metals, turbulent liquid or gaseous fluorine and a few fluoro-chemicals such as chlorine trifluoride or oxygen difluoride which readily liberate free fluorine at elevated temperatures.				220°F 104°C	-35°F -37°C
PVDF: Generally reserved for applications requiring the highest purity, strength, and resistance to solvents, acids & bases				250°F 121°C	0°F -18°C
Polypropylene: Generally rugged and usually resistant to many chemicals solvents. Rugged and often stiffer than other plastics, economical.				180°F 82°C	-35°F 0°C
Nitrile: General purpose, oil-resistant. Shows good solvent, oil, water and hydraulic fluid resistance. Should not be used with highly polar solvents like acetone and MEK, ozone, chlorinated hydrocarbons and nitro hydrocarbons.				190°F 88°C	-10°F -23°C

For specific applications, always consult the Warren Rupp "Chemical Resistance Chart"

SANDPIPER® pumps are designed to be powered only by compressed air.

Explanation of Pump Nomenclature

S05 Non-Metallic · Design Level 2· Ball Valve

Model	Pump Brand	Pump Size	Check Valve Type	Design Level	Wetted Material	Diaphragm/Check Valve Materials	Check Valve Seat	Non-Wetted Material Options	Porting Options	Pump Style	Pump Options	Kit Options	Shipping Weight lbs. (kg)
S05B2P1TPNS000.	S	05	B	2	P	1	T	P	N	S	0	00.	16 (8)
S05B2P2TPNS000.	S	05	B	2	P	2	T	P	N	S	0	00.	16 (8)
S05B2PUTPNS000.	S	05	B	2	P	U	T	P	N	S	0	00.	16 (8)
S05B2K1TPNS000.	S	05	B	2	K	1	T	P	N	S	0	00.	18 (9)
S05B2K2TPNS000.	S	05	B	2	K	2	T	P	N	S	0	00.	18 (9)
S05B2KUTPNS000.	S	05	B	2	K	U	T	P	N	S	0	00.	18 (9)
S05B2N1TPNS000.	S	05	B	2	N	1	T	P	N	S	0	00.	16 (8)
S05B2N2TPNS000.	S	05	B	2	N	2	T	P	N	S	0	00.	16 (8)
S05B2NUTPNS000.	S	05	B	2	N	U	T	P	N	S	0	00.	16 (8)
S05B2P1TPBS000.	S	05	B	2	P	1	T	P	B	S	0	00.	16 (8)
S05B2P2TPBS000.	S	05	B	2	P	2	T	P	B	S	0	00.	16 (8)
S05B2PUTPBS000.	S	05	B	2	P	U	T	P	B	S	0	00.	16 (8)
S05B2K1TPBS000.	S	05	B	2	K	1	T	P	B	S	0	00.	18 (9)
S05B2K2TPBS000.	S	05	B	2	K	2	T	P	B	S	0	00.	18 (9)
S05B2KUTPBS000.	S	05	B	2	K	U	T	P	B	S	0	00.	18 (9)
S05B2N1TPBS000.	S	05	B	2	N	1	T	P	B	S	0	00.	16 (8)
S05B2N2TPBS000.	S	05	B	2	N	2	T	P	B	S	0	00.	16 (8)
S05B2NUTPBS000.	S	05	B	2	N	U	T	P	B	S	0	00.	16 (8)

Pump Brand
S= SANDPIPER®

Pump Size
05=1/2"

Check Valve Type
B= Solid Ball

Design Level
2= Design Level

Wetted Material
K= PVDF
N= Nylon
P= Polypropylene

⚠ C= Conductive Polypropylene
⚠ V= Conductive PVDF

Diaphragm/Check Valve Materials

1= Santoprene/Santoprene
2= Virgin PTFE-Santoprene Backup/Virgin PTFE
B= Nitrile/Nitrile
U= Polyurethane/Polyurethane
Z= One-Piece Bonded/PTFE

Check Valve Seat
T= Virgin PTFE

Non-Wetted Material Options
P= Polypropylene
1= Polypropylene w/PTFE Coated Hardware

⚠ C= Conductive Polypropylene

Porting Options

N= NPT Threads
B= BSP (Tapered) Threads
1= Dual Porting (NPT)
2= Top Dual Porting (NPT)
3= Bottom Dual Porting (NPT)
4= Dual Porting (BSP Tapered)
5= Top Dual Porting (BSP Tapered)
6= Bottom Dual Porting (BSP Tapered)

Pump Style
S= Standard

Pump Options

⚠ 0= None
1= Sound Dampening Muffler
2= Mesh Muffler
⚠ 6= Metal Muffler
⚠ 7= Metal Muffler with Grounding Cable

Kit Options

⚠ 00.= None
P0.= 0-30VDC Pulse Output Kit
⚠ P1.= Intrinsically-Safe 10-30VDC, 110/120VAC 220/240 VAC Pulse Output Kit
P2.= 110/120 or 220/240VAC Pulse Output Kit
⚠ E0.= Solenoid Kit w/24VDC Coil
⚠ E1.= Solenoid Kit w/24VDC Explosion-Proof Coil
E2.= Solenoid Kit w/24VAC/12VDC Coil

Kit Options Cont.

⚠ E3.= Solenoid Kit w/24VAC/12VDC Coil
E4.= Solenoid Kit w/110VAC Coil
⚠ E5.= Solenoid Kit w/110VAC Explosion-Proof Coil
E6.= Solenoid Kit w/220VAC Coil
⚠ E7.= Solenoid Kit w/220VAC Explosion-Proof Coil
⚠ E8.= Solenoid Kit with 110VAC, 50 Hz Explosion-Proof Coil
⚠ E9.= Solenoid Kit with 230VAC, 50 Hz Explosion-Proof Coil
SP= Stroke Indicator Pins

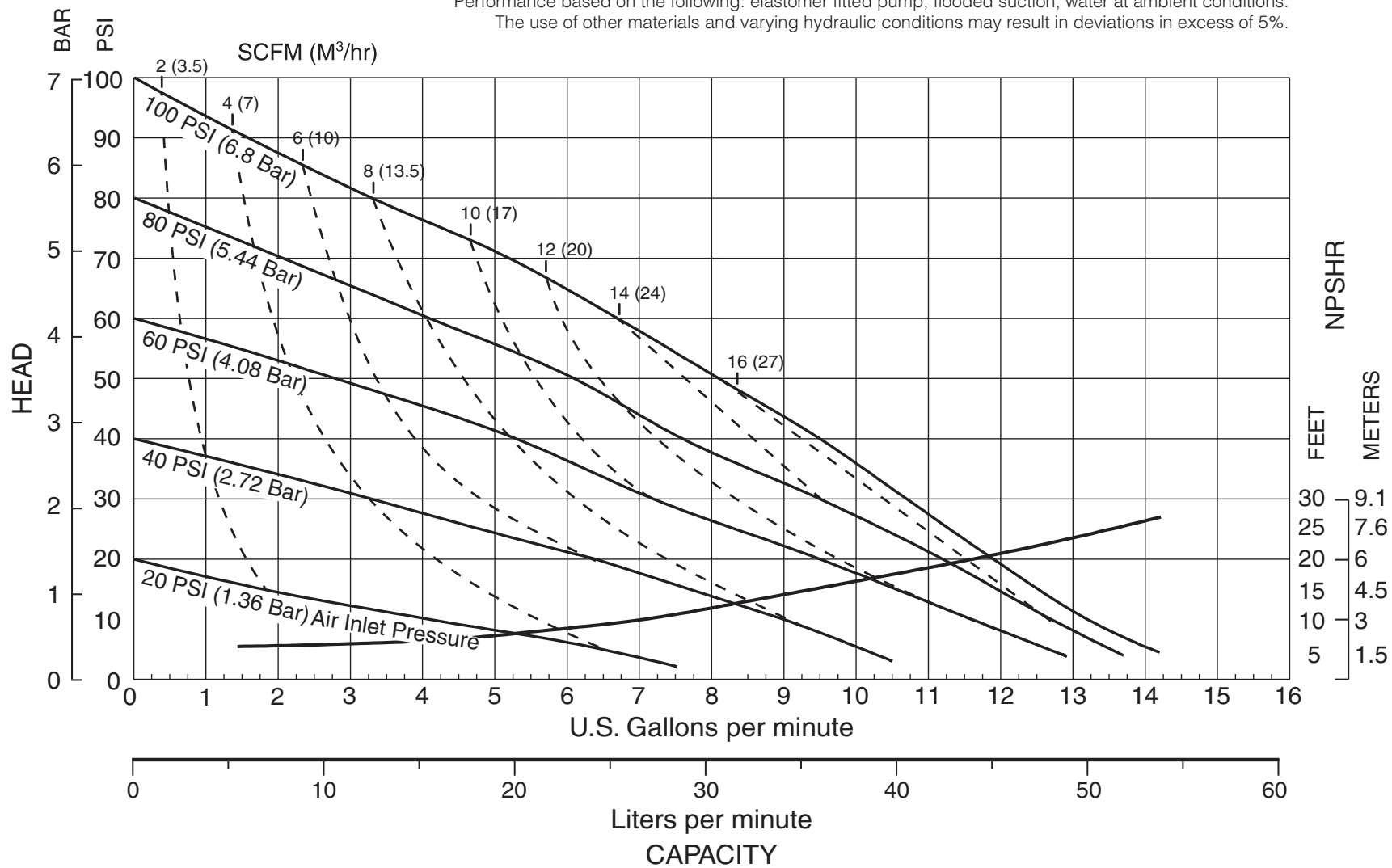


Note: Pumps are only ATEX compliant when ordered with wetted material option C or V, non-wetted material option C, pump option 0, 6 or 7, and kit options 00, P1, E1, E3, E5, E7, E8 or E9.

Performance Curve, S05 Non-Metallic Design Level 2

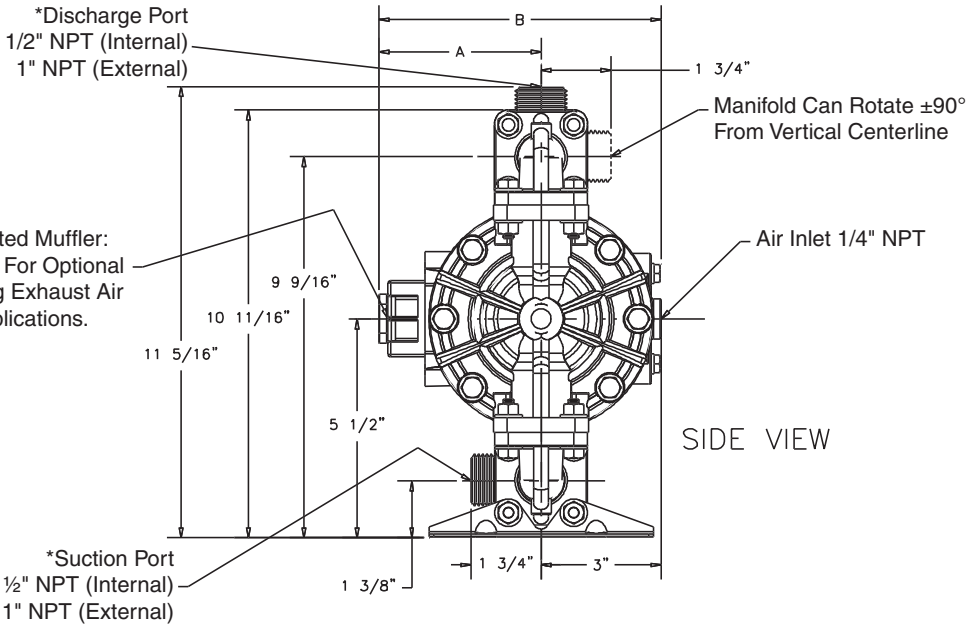
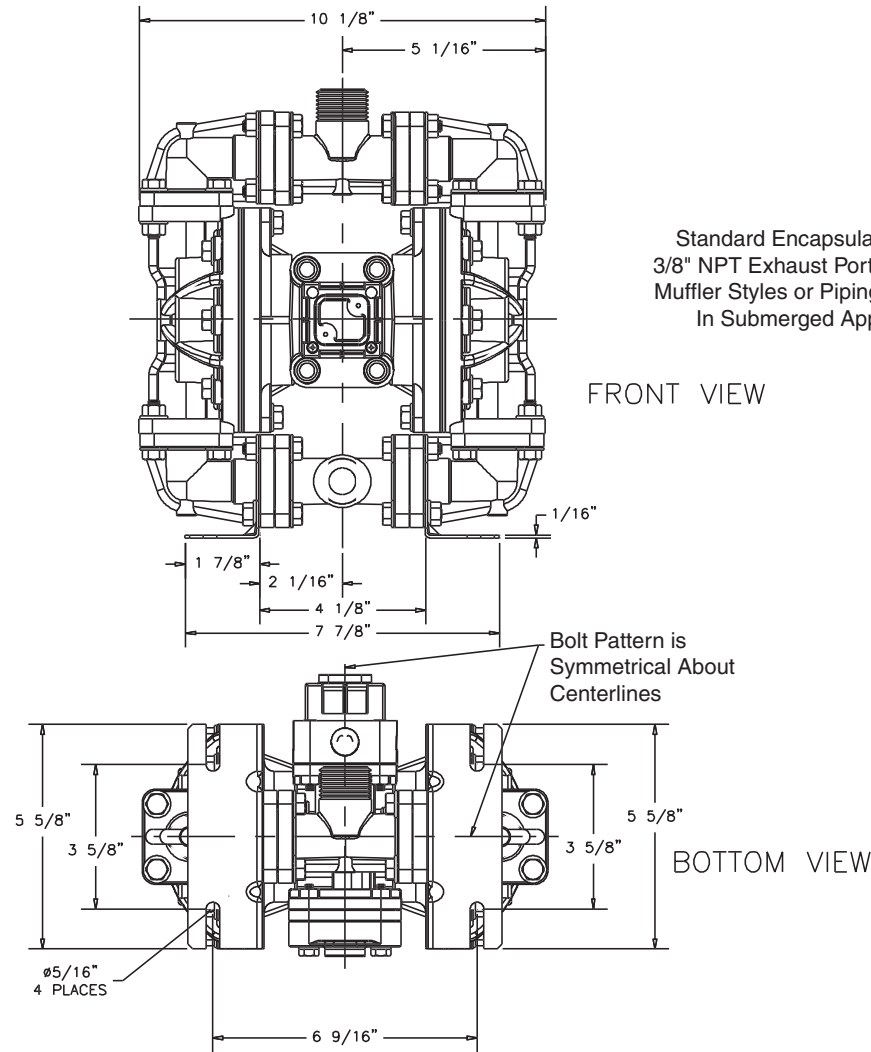
MODEL S05 Non-Metallic Performance Curve

Performance based on the following: elastomer fitted pump, flooded suction, water at ambient conditions.
The use of other materials and varying hydraulic conditions may result in deviations in excess of 5%.



Dimensions: S05 Non-Metallic

Dimensions in Inches
Dimensional tolerance: $\pm 1/8$ "

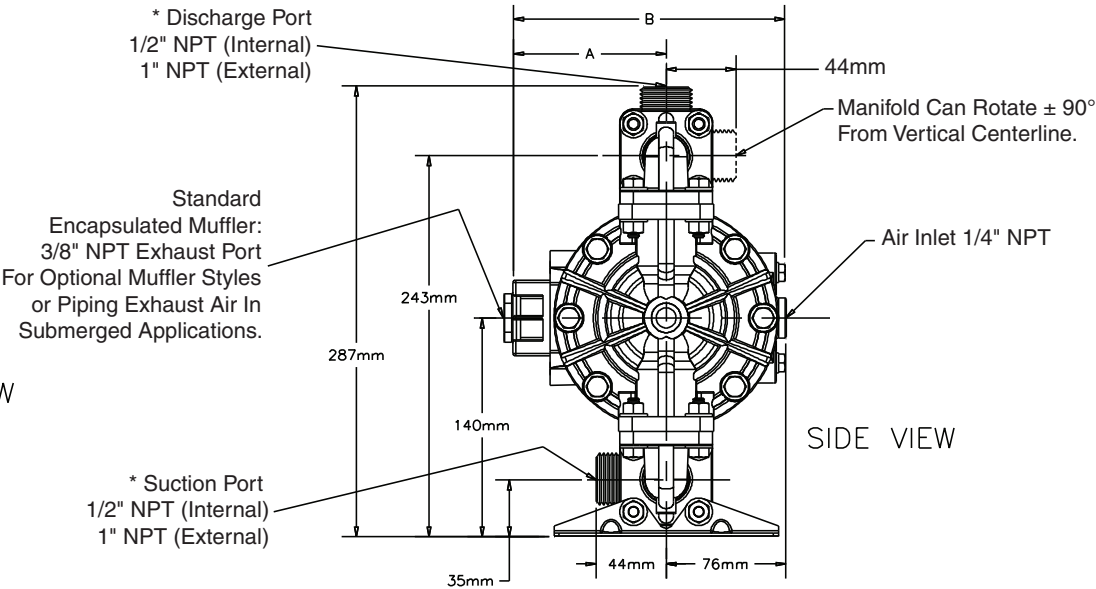
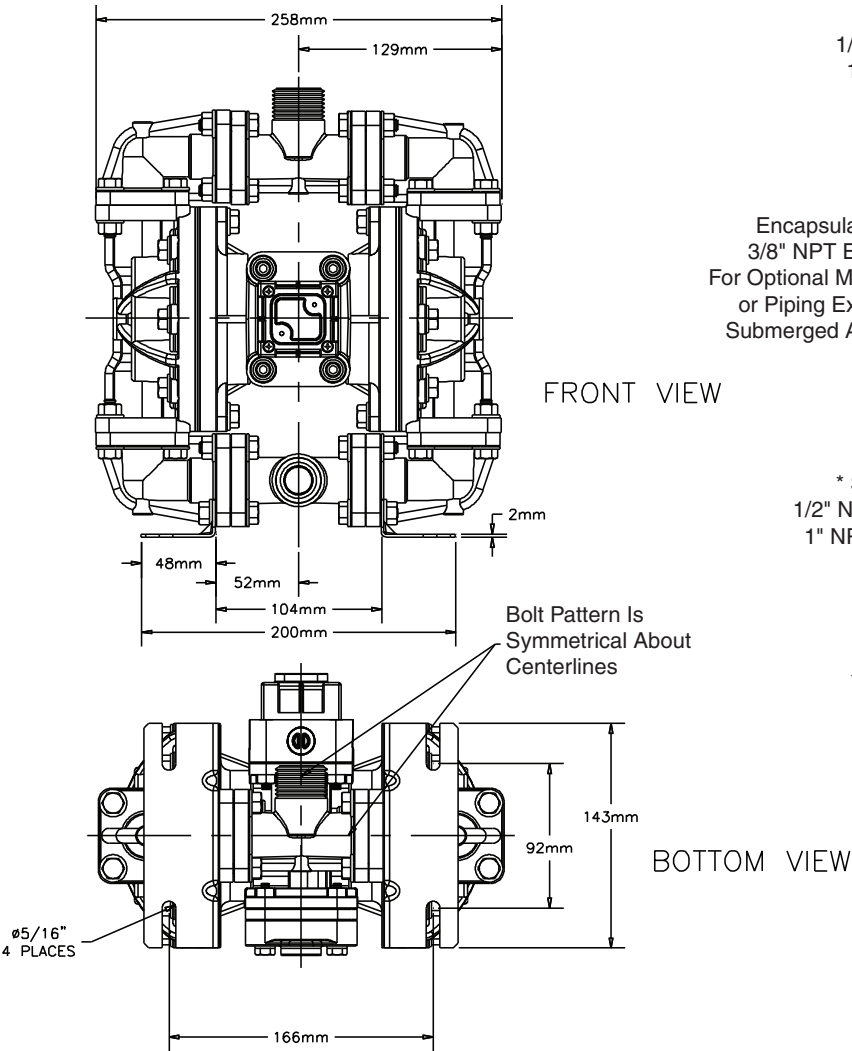


*Both Suction And Discharge Ports are Available in
1/2" BSP Tapered (Internal)
1" BSP Tapered (External)

DIMENSION	A	B
Standard Pump	4 1/16"	7 1/16"
Pulse Output Kit	4 1/16"	7 1/16"
Mesh Muffler	5 3/4"	8 3/4"
Sound Dampening Muffler	5 3/4"	8 3/4"
Metal Muffler	5 1/4"	8 1/4"

Metric Dimensions: S05 Non-Metallic

Dimensions in millimeters
Dimensional tolerance: ±3mm



*Both Suction And Discharge Ports are Available in
1/2" BSP Tapered (Internal)
1" BSP Tapered (External)

DIMENSION	A	B
Standard Pump	103mm	179mm
Pulse Output Kit	103mm	179mm
Mesh Muffler	146mm	222mm
Sound Dampening Muffler	146mm	222mm
Metal Muffler	133mm	210mm

PRINCIPLE OF PUMP OPERATION

This ball type check valve pump is powered by compressed air and is a 1:1 ratio design. The inner side of one diaphragm chamber is alternately pressurized while simultaneously exhausting the other inner chamber. This causes the diaphragms, which are connected by a common rod secured by plates to the centers of the diaphragms, to move in a reciprocating action. (As one diaphragm performs the discharge stroke the other diaphragm is pulled to perform the suction stroke in the opposite chamber.) Air pressure is applied over the entire inner surface of the diaphragm while liquid is discharged from the opposite side of the diaphragm. The diaphragm operates in a balanced condition during the discharge stroke which allows the pump to be operated at discharge heads over 200 feet (61 meters) of water.

For maximum diaphragm life, keep the pump as close to the liquid being pumped as possible. Positive suction head in excess of 10 feet of liquid (3.048 meters) may require a back pressure regulating device to maximize diaphragm life.

Alternate pressurizing and exhausting of the diaphragm chamber is performed by an externally mounted, pilot operated, four way spool type air distribution valve. When the spool shifts to one end of the valve body, inlet pressure is applied to one diaphragm chamber and the other diaphragm chamber exhausts. When the spool shifts to the opposite end of the valve body, the pressure to the chambers

is reversed. The air distribution valve spool is moved by a internal pilot valve which alternately pressurizes one end of the air distribution valve spool while exhausting the other end. The pilot valve is shifted at each end of the diaphragm stroke when a actuator plunger is contacted by the diaphragm plate. This actuator plunger then pushes the end of the pilot valve spool into position to activate the air distribution valve.

The chambers are connected with manifolds with a suction and discharge check valve for each chamber, maintaining flow in one direction through the pump.

INSTALLATION AND START-UP

Locate the pump as close to the product being pumped as possible. Keep the suction line length and number of fittings to a minimum. Do not reduce the suction line diameter.

For installations of rigid piping, short sections of flexible hose should be installed between the pump and the piping. The flexible hose reduces vibration and strain to the pumping system. A Warren Rupp Tranquillizer® surge suppressor is recommended to further reduce pulsation in flow.

AIR SUPPLY

Air supply pressure cannot exceed 125 psi (8.6 bar). Connect the pump air inlet to an air supply of sufficient capacity and pressure required for desired performance. When the air supply line is solid piping, use a short length of flexible hose not less than 1/2" (13mm) in diameter between the pump and the piping to reduce strain

to the piping. The weight of the air supply line, regulators and filters must be supported by some means other than the air inlet cap. Failure to provide support for the piping may result in damage to the pump. A pressure regulating valve should be installed to insure air supply pressure does not exceed recommended limits.

AIR VALVE LUBRICATION

The air distribution valve and the pilot valve are designed to operate WITHOUT lubrication. This is the preferred mode of operation. There may be instances of personal preference or poor quality air supplies when lubrication of the compressed air supply is required. The pump air system will operate with properly lubricated compressed air supply. Proper lubrication requires the use of an air line lubricator (available from Warren Rupp) set to deliver one drop of SAE 10 non-detergent oil for every 20 SCFM (9.4 liters/sec.) of air the pump consumes at the point of operation. Consult the pump's published Performance Curve to determine this.

AIR LINE MOISTURE

Water in the compressed air supply can create problems such as icing or freezing of the exhaust air, causing the pump to cycle erratically or stop operating. Water in the air supply can be reduced by using a point-of-use air dryer to supplement the user's air drying equipment. This device removes water from the compressed air supply and alleviates the icing or freezing problems.

AIR INLET AND PRIMING

To start the pump, open the air valve approximately 1/2" to 3/4" turn. After the pump primes, the air valve can be opened to increase air flow as desired. If opening the valve increases cycling rate, but does not increase the rate of flow, cavitation has occurred. The valve should be closed slightly to obtain the most efficient air flow to pump flow ratio.

BETWEEN USES

When the pump is used for materials that tend to settle out or solidify when not in motion, the pump should be flushed after each use to prevent damage. (Product remaining in the pump between uses could dry out or settle out. This could cause problems with the diaphragms and check valves at restart.) In freezing temperatures the pump must be completely drained between uses in all cases.

INSTALLATION GUIDE Top Discharge Ball Valve Unit

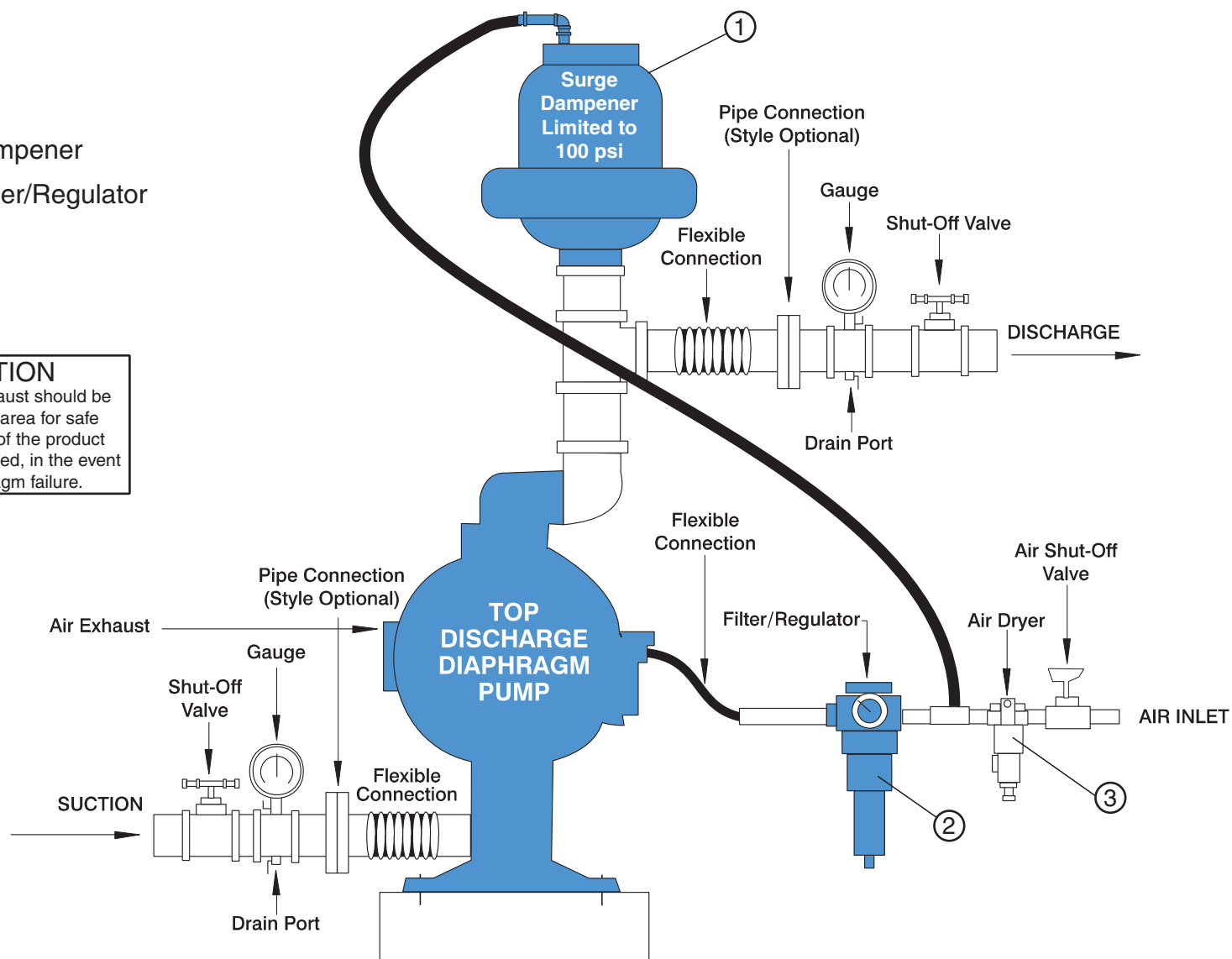
Available from
Warren Rupp

- ① DA05 Surge Dampener
- ② 020-049-000 Filter/Regulator
- ③ Air Dryer



CAUTION

The air exhaust should be piped to an area for safe disposition of the product being pumped, in the event of a diaphragm failure.



TROUBLESHOOTING

Possible Symptoms:

- Pump will not cycle.
- Pump cycles, but produces no flow.
- Pump cycles, but flow rate is unsatisfactory.
- Pump cycle seems unbalanced.
- Pump cycle seems to produce excessive vibration.

What to Check: Excessive suction lift in system.

Corrective Action: For lifts exceeding 20 feet (6 meters), filling the pumping chambers with liquid will prime the pump in most cases.

What to Check: Excessive flooded suction in system.

Corrective Action: For flooded conditions exceeding 10 feet (3 meters) of liquid, install a back pressure device.

What to Check: System head exceeds air supply pressure.

Corrective Action: Increase the inlet air pressure to the pump. Most diaphragm pumps are designed for 1:1 pressure ratio at zero flow.

What to Check: Air supply pressure or volume exceeds system head.

Corrective Action: Decrease inlet air pressure and volume to the pump as calculated on the published PERFORMANCE CURVE. Pump is cavitating the fluid by fast cycling.

What to Check: Undersized suction line.

Corrective Action: Meet or exceed pump connection recommendations shown on the DIMENSIONAL DRAWING.

What to Check: Restricted or undersized air line.

Corrective Action: Install a larger air line and connection. Refer to air inlet recommendations shown in your pump's SERVICE MANUAL.

What to Check: Check ESADS, the Externally Serviceable Air Distribution System of the pump.

Corrective Action: Disassemble and inspect the main air distribution valve, pilot valve and pilot valve actuators. Refer to the parts drawing and air valve section of the SERVICE MANUAL. Check for clogged discharge or closed valve before reassembly.

What to Check: Rigid pipe connections to pump.

Corrective Action: Install flexible connectors and a Warren Rupp Tranquilizer® Surge Suppressor.

What to Check: Blocked air exhaust muffler.

Corrective Action: Remove muffler screen, clean or de-ice and reinstall. Refer to the Air Exhaust section of your pump SERVICE MANUAL.

What to Check: Pumped fluid in air exhaust muffler.

Corrective Action: Disassemble pump chambers. Inspect for diaphragm rupture or loose diaphragm plate assembly. Refer to the Diaphragm Replacement section of your pump SERVICE MANUAL.

What to Check: Suction side air leakage or air in product.

Corrective Action: Visually inspect all suction side gaskets and pipe connections.

What to Check: Obstructed check valve.

Corrective Action: Disassemble the wet end of the pump and manually dislodge obstruction in the check valve pocket. Refer to the Check Valve section of the pump SERVICE MANUAL for disassembly instructions.

What to Check: Worn or misaligned check valve or check valve seat.

Corrective Action: Inspect check valves and seats for wear and proper seating. Replace if necessary. Refer to Check Valve section of the pump SERVICE MANUAL for disassembly instructions.

What to Check: Blocked suction line.

Corrective Action: Remove or flush obstruction. Check and clear all suction screens and strainers.

What to Check: Blocked discharge line.

Corrective Action: Check for obstruction or closed discharge line valves.

What to Check: Blocked pumping chamber.

Corrective Action: Disassemble and inspect the wetted chambers of the pump. Remove or flush any obstructions. Refer to the pump SERVICE MANUAL for disassembly instructions.

What to Check: Entrained air or vapor lock in one or both pumping chambers.

Corrective Action: Purge chambers through tapped chamber vent plugs. PURGING THE CHAMBERS OF AIR CAN BE DANGEROUS! Contact the Warren Rupp Technical Services Department before performing this procedure. Any model with top-ported discharge will reduce or eliminate problems with entrained air.

If your pump continues to perform below your expectations, contact your local Warren Rupp Distributor or factory Technical Services Group for a service evaluation.

WARRANTY

Refer to the enclosed Warren Rupp Warranty Certificate.

RECYCLING

Many components of SANDPIPER® AODD pumps are made of recyclable materials (see chart on page 10 for material specifications). We encourage pump users to recycle worn out parts and pumps whenever possible, after any hazardous pumped fluids are thoroughly flushed.



II 2GD T5



Pump complies with EN809 Pumping Directive, Directive 98/37/EC Safety of Machinery, and Directive 94/9/EC, EN13463-1 Equipment for use in Potentially Explosive Environments. For reference to the directive certificates visit: www.warrenrupp.com. The Technical File No. AX1 is stored at KEMA, Notified Body 0344, under Document #203040000.

IMPORTANT SAFETY INFORMATION



! IMPORTANT

Read these safety warnings and instructions in this manual completely, before installation and start-up of the pump. It is the responsibility of the purchaser to retain this manual for reference. Failure to comply with the recommendations stated in this manual will damage the pump, and void factory warranty.



! CAUTION

Before pump operation, inspect all gasketed fasteners for looseness caused by gasket creep. Re-torque loose fasteners to prevent leakage. Follow recommended torques stated in this manual.



! WARNING

Before maintenance or repair, shut off the compressed air line, bleed the pressure, and disconnect the air line from the pump. The discharge line may be pressurized and must be bled of its pressure.



! WARNING

In the event of diaphragm rupture, pumped material may enter the air end of the pump, and be discharged into the atmosphere. If pumping a product which is hazardous or toxic, the air exhaust must be piped to an appropriate area for safe disposition.



! WARNING

Take action to prevent static sparking. Fire or explosion can result, especially when handling flammable liquids. The pump, piping, valves, containers or other miscellaneous equipment must be grounded. (See page 31)



! WARNING

This pump is pressurized internally with air pressure during operation. Always make certain that all bolting is in good condition and that all of the correct bolting is reinstalled during assembly.



! WARNING

When used for toxic or aggressive fluids, the pump should always be flushed clean prior to disassembly.



! WARNING

Before doing any maintenance on the pump, be certain all pressure is completely vented from the pump, suction, discharge, piping, and all other openings and connections. Be certain the air supply is locked out or made non-operational, so that it cannot be started while work is being done on the pump. Be certain that approved eye protection and protective clothing are worn all times in the vicinity of the pump. Failure to follow these recommendations may result in serious injury or death.



! WARNING

Airborne particles and loud noise hazards. Wear ear and eye protection.

Material Codes

The Last 3 Digits of Part Number

000	Assembly, sub-assembly; and some purchased items	180	Copper Alloy	378	High Density Polypropylene	604	PTFE
010	Cast Iron	305	Carbon Steel, Black Epoxy Coated	379	Conductive Nitrile	606	PTFE
012	Powered Metal	306	Carbon Steel, Black PTFE Coated	405	Cellulose Fibre	607	Envelon
015	Ductile Iron	307	Aluminum, Black Epoxy Coated	408	Cork and Neoprene	608	Conductive PTFE
020	Ferritic Malleable Iron	308	Stainless Steel, Black PTFE Coated	425	Compressed Fibre	610	PTFE Integral Silicon
025	Music Wire	309	Aluminum, Black PTFE Coated	426	Blue Gard	611	PTFE Integral FKM
080	Carbon Steel, AISI B-1112	310	PVDF Coated	440	Vegetable Fibre	632	Neoprene/Hytrel
100	Alloy 20	330	Zinc Plated Steel	465	Fibre	633	FKM (Fluorocarbon)/PTFE
110	Alloy Type 316 Stainless Steel	331	Chrome Plated Steel	500	Delrin 500	634	EPDM/PTFE
111	Alloy Type 316 Stainless Steel (Electro Polished)	332	Aluminum, Electroless Nickel Plated	501	Delrin 570	635	Neoprene/PTFE
112	Alloy C	333	Carbon Steel, Electroless Nickel Plated	502	Conductive Acetal, ESD-800	637	PTFE, FKM (Fluorocarbon)/PTFE
113	Alloy Type 316 Stainless Steel (Hand Polished)	335	Galvanized Steel	503	Conductive Acetal, Glass-Filled	638	PTFE, Hytrel/PTFE
114	303 Stainless Steel	336	Zinc Plated Yellow Brass	505	Acrylic Resin Plastic	639	Nitrile/TFE
115	302/304 Stainless Steel	337	Silver Plated Steel	506	Delrin 150	643	Santoprene/EPDM
117	440-C Stainless Steel (Martensitic)	340	Nickel Plated	520	Injection Molded PVDF Natural color	644	Santoprene/PTFE
120	416 Stainless Steel (Wrought Martensitic)	342	Filled Nylon	521	Conductive PVDF	650	Bonded Santoprene and PTFE
123	410 Stainless Steel (Wrought Martensitic)	353	Geolast; Color: Black	540	Nylon	654	Santoprene Diaphragm, PTFE Overlay Balls and seals
148	Hardcoat Anodized Aluminum	354	Injection Molded #203-40 Santoprene- Duro 40D +/-5; Color: RED	541	Nylon	656	Santoprene Diaphragm and Check Balls/EPDM Seats
149	2024-T4 Aluminum	355	Thermal Plastic	542	Nylon	661	EPDM/Santoprene
150	6061-T6 Aluminum	356	Hytrel	544	Nylon Injection Molded		
151	6063-T6 Aluminum	357	Injection Molded Polyurethane	550	Polyethylene		
152	2024-T4 Aluminum (2023-T351)	358	Urethane Rubber (Some Applications) (Compression Mold)	551	Glass Filled Polypropylene		
154	Almag 35 Aluminum	359	Urethane Rubber	552	Unfilled Polypropylene		
155	356-T6 Aluminum	360	Nitrile Rubber. Color coded: RED	553	Unfilled Polypropylene		
156	356-T6 Aluminum	361	FDA Accepted Nitrile	555	Polyvinyl Chloride		
157	Die Cast Aluminum Alloy #380	363	FKM (Fluorocarbon). Color coded: YELLOW	556	Black Vinyl		
158	Aluminum Alloy SR-319	364	E.P.D.M. Rubber. Color coded: BLUE	557	Conductive Polypropylene		
159	Anodized Aluminum	365	Neoprene Rubber. Color coded: GREEN	558	Conductive HDPE		
162	Brass, Yellow, Screw Machine Stock	366	Food Grade Nitrile	559	Glass-Filled Conductive Polypropylene		
165	Cast Bronze, 85-5-5-5	368	Food Grade EPDM	570	Rulon II		
166	Bronze, SAE 660	370	Butyl Rubber. Color coded: BROWN	580	Ryton		
170	Bronze, Bearing Type, Oil Impregnated	371	Philthane (Tuftane)	590	Valox		
175	Die Cast Zinc	374	Carboxylated Nitrile	591	Nylatron G-S		
		375	Fluorinated Nitrile	592	Nylatron NSB		
				600	PTFE (virgin material)		
					Tetrafluorocarbon (TFE)		
				601	PTFE (Bronze and moly filled)		
				602	Filled PTFE		
				603	Blue Gylon		

Delrin and Hytrel are registered tradenames of E.I. DuPont.

Gylon is a registered tradename of Garlock, Inc.

Nylatron is a registered tradename of Polymer Corp.

Santoprene is a registered tradename of Monsanto Corp.

Rulon II is a registered tradename of Dixon Industries Corp.

Ryton is a registered tradename of Phillips Chemical Co.

Valox is a registered tradename of General Electric Co.

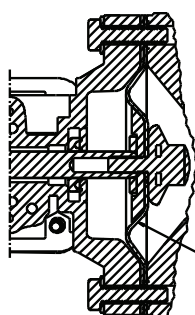
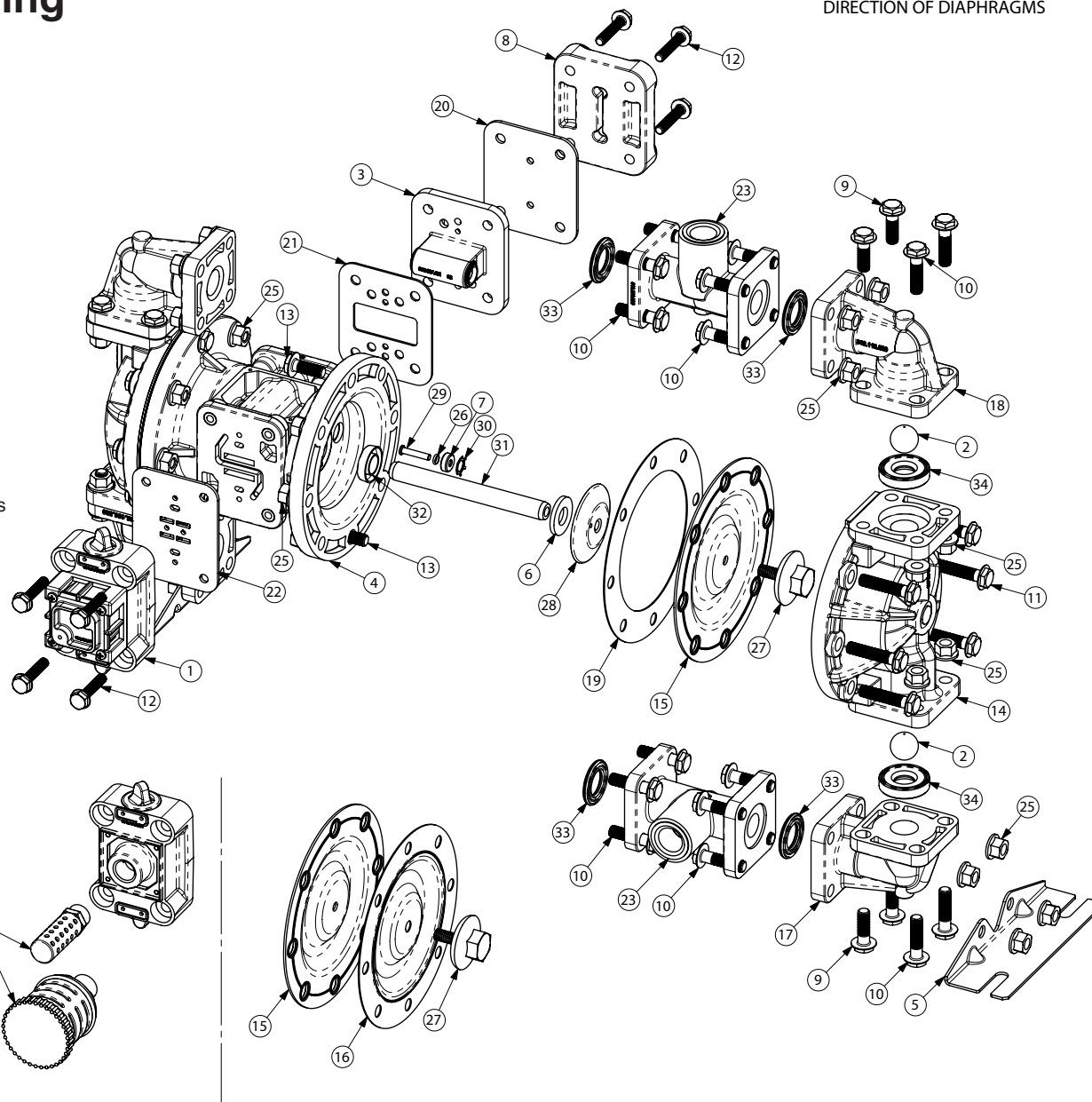
Warren Rupp, SANDPIPER, Portapump, Tranquilizers and SludgeMaser are registered tradenames of Warren Rupp, Inc.

Composite Repair Parts Drawing

ILLUSTRATION SHOWS
DIRECTION OF DIAPHRAGMS

Available Service And Conversion Kits

- 476-219-000 AIR END KIT**
Seals, O-ring, Gaskets, Retaining Rings, Air Valve Assembly and Pilot Valve Assembly
- 476-220-000 AIR END KIT (Air Valve with Stroke Indicator Pin)**
Seals, O-ring, Gaskets, Retaining Rings, Air Valve Assembly Pilot Valve Assembly
- 476-202-360 WET END KIT**
Nitrile Diaphragms, Nitrile Check Balls, PTFE Seats and PTFE Seals
- 476-202-354 WET END KIT**
Santoprene Diaphragms, Nitrile Spacer Gaskets, Santoprene Check Balls, PTFE Seats and PTFE Seals
- 476-202-357 WET END KIT**
Polyurethane Diaphragms, Nitrile Spacer Gaskets, Santoprene Check Balls, PTFE Seats and PTFE Seals
- 476-202-654 WET END KIT**
Santoprene Diaphragms, PTFE Overlay Diaphragm, PTFE Check Balls, PTFE Seats and PTFE Seals
- 476-202-659 WETTED END KIT**
One-Piece Bonded PTFE/Nitrile Diaphragm, PTFE Balls, PTFE Seats



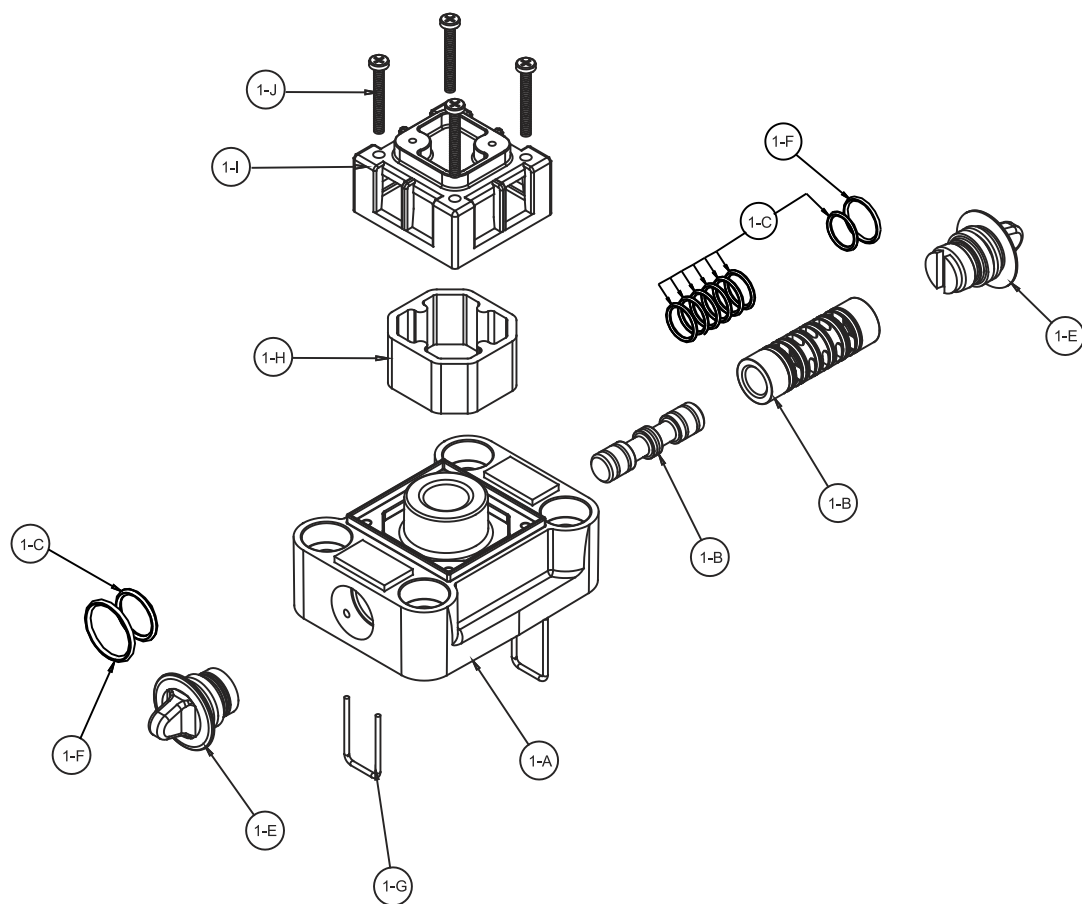
DIAPHRAGM CONFIGURATION
DETAIL

NOTE TO ASSEMBLY
THE DIAPHRAGMS FOR BOTH
CONFIGURATIONS SHOWN ABOVE ARE TO BE
INSTALLED WITH CONVOLUTIONS FACING
TOWARDS CENTER OF PUMP

Composite Repair Parts List

Item	Part Number	Description	Qty
1	031-166-000	Air Valve Assembly	1
	031-166-002	Air Valve Assembly (with PTFE Coated Hardware)	1
	⚠ 031-166-003	Air Valve Assembly (with Conductive Polypropylene)	1
	⚠ 031-167-000	Air Valve Assembly (with Stroke Indicator Pins)	1
	031-167-002	Air Valve Assembly (with Stroke Indicator Pins and PTFE Coated Hardware)	1
	031-168-000	Air Valve Assembly	1
	⚠ 031-168-002	Air Valve Assembly-Conductive Polypropylene	1
	⚠ 031-169-000	Air Valve Assembly (no muffler with Stroke Indicator Pins)	1
	031-194-000	High Temperature	1
	⚠ 031-194-002	High Temperature-Conductive Polypropylene	1
	031-195-000	High Temperature	1
	⚠ 031-195-003	High Temperature-Conductive Polypropylene	1
2	050-027-354	Ball, Check	4
	050-027-357	Ball, Check	4
	050-027-360	Ball, Check	4
	050-022-600	Ball, Check	4
3	095-091-000	Pilot Valve Assembly	1
4	114-023-551	Bracket, Intermediate	1
	⚠ 114-023-559	Bracket, Intermediate	1
5	115-140-115	Bracket, Mounting	2
	115-140-308	Bracket, Mounting	2
6	132-034-360	Bumper, Diaphragm	2
7	135-036-506	Bushing, Plunger	2
8	165-110-551	Cap, Air Inlet	1
	⚠ 165-110-559	Cap, Air Inlet	1
9	171-062-115	Capscrew, Flanged 5/16-18 X 1.00	12
	171-062-308	Capscrew, Flanged 5/16-18 X 1.00	12
10	171-063-115	Capscrew, Flanged 5/16-18 X 1.25	24
	171-063-308	Capscrew, Flanged 5/16-18 X 1.25	24
11	171-064-115	Capscrew, Flanged 5/16-18 X 1.50	12
	171-064-308	Capscrew, Flanged 5/16-18 X 1.50	12
12	171-066-115	Capscrew, Flanged 1/4-20 X 1.25	8
	171-066-308	Capscrew, Flanged 1/4-20 X 1.25	8
13	171-075-115	Capscrew, Flanged 5/16-18 X .88	4
	171-075-308	Capscrew, Flanged 5/16-18 X .88	4
14	196-178-520	Chamber, Outer	2
	⚠ 196-178-521	Chamber, Outer	2
	196-178-542	Chamber, Outer	2
	196-178-552	Chamber, Outer	2
	⚠ 196-178-557	Chamber, Outer	2
15	286-095-354	Diaphragm	2
	286-095-357	Diaphragm	2
15	286-095-360	Diaphragm	2
	286-116-000	Diaphragm, One-Piece	2
16	286-096-600	Diaphragm, Overlay	2
17	312-106-520	Elbow, Suction	2
	⚠ 312-106-521	Elbow, Suction	2
	312-106-542	Elbow, Suction	2
	312-106-552	Elbow, Suction	2
	⚠ 312-106-557	Elbow, Suction	2
18	312-112-520	Elbow, Discharge	2
	⚠ 312-112-521	Elbow, Discharge	2
	312-112-542	Elbow, Discharge	2
	312-112-552	Elbow, Discharge	2
	⚠ 312-112-557	Elbow, Discharge	2
19	360-099-360	Gasket, Spacer (use w/TPE Diaphragms Only)	2
20	360-100-379	Gasket, Air Inlet	1
21	360-101-360	Gasket, Pilot Valve	1
22	360-102-360	Gasket, Air Valve	1
23	518-138-520	Manifold, NPT	2
	518-138-520E	Manifold, BSP Tapered	2
	⚠ 518-138-521	Manifold, NPT	2
	⚠ 518-138-521E	Manifold, BSP Tapered	2
	518-138-542	Manifold, NPT	2
	518-138-542E	Manifold, BSP Tapered	2
	518-138-552	Manifold, NPT	2
	518-138-552E	Manifold, BSP Tapered	2
	⚠ 518-138-557	Manifold, NPT	2
	⚠ 518-138-557E	Manifold, BSP Tapered	2
24	530-023-000	Muffler with metal mesh element, (Not available for Conductive Polypropylene or PVDF)	1
	530-024-000	Muffler with porous plastic element, (Not available for Conductive Polypropylene or PVDF)	1
	⚠ 530-035-000	Muffler	1
25	544-005-115	Nut, Flanged 5/16-18	36
	544-005-308	Nut, Flanged 5/16-18	36
26	560-001-360	O-ring	2
27	612-091-520	Plate, Outer Diaphragm	2
	612-091-542	Plate, Outer Diaphragm	2
	612-091-552	Plate, Outer Diaphragm	2
28	612-177-330	Plate, Inner Diaphragm	2
	612-221-330	Plate, Inner Diaphragm (use with 286-116-000)	2
29	620-019-115	Plunger, Actuator	2
30	675-042-115	Ring, Retaining	2
31	685-056-120	Rod, Diaphragm	1
32	720-012-360	Seal, Diaphragm Rod	2
33	720-045-600	Seal, Manifold	4
34	722-099-600	Seat, Check Valve	4

Air Distribution Valve Assembly Drawing



MAIN AIR VALVE ASSEMBLY PARTS LIST

Item	Part Number	Description	Qty
1	031-166-000	Air Valve Assembly	1
1-A	095-106-551	Body, Air Valve	1
1-B	031-132-000	Sleeve and Spool Set	1
1-C	560-101-360	O-Ring	8
1-E	165-122-551	End Cap	2
1-F	560-026-360	O-Ring	2
1-G	675-062-115	End Cap Retainer	2
1-H	530-031-550	Muffler	1
1-I	165-109-551	Muffler Cap	1
1-J	710-011-115	Self-Tapping Screw	4

For Pumps with Virgin PTFE coated hardware:

1	031-166-002	Air Valve Assembly	1
1-G	675-062-308	End Cap Retainer	2
1-J	710-011-308	Self Tapping Screw	4

(Includes all other items used on 031-166-000 above)

For Pumps with alternate Mesh or Sound Dampening Mufflers or Piped Exhaust:

1	031-168-000	Air Valve Assembly	1
---	-------------	--------------------	---

(Includes all items used on 031-166-000 above minus 1-H, 1-I and 1-J)

MAIN AIR VALVE ASSEMBLY PARTS LIST

Item	Part Number	Description	Qty
1	031-166-003	Air Valve Assembly	1
1-A	095-106-559	Body, Air Valve	1
1-B	031-132-000	Sleeve and Spool Set	1
1-C	560-101-360	O-Ring	8
1-E	165-122-551	End Cap	2
1-F	560-026-360	O-Ring	2
1-G	675-062-115	End Cap Retainer	2
1-H	530-031-550	Muffler	1
1-I	165-109-559	Muffler Cap	1
1-J	710-011-115	Self-Tapping Screw	4

For Pumps with alternate Mesh Muffler or Piped Exhaust:

1	031-168-002	Air Valve Assembly	1
---	-------------	--------------------	---

(Includes all items used on 031-166-003 above minus 1-H, 1-I and 1-J)

For pumps with High Temperature Options:

1	031-194-000	Air Valve Assembly	1
1-B	031-175-000	Sleeve and Spool Set	1
(Includes all the other items on 031-168-000 above)			
1	031-195-000	Air Valve Assembly	1
1	031-175-000	Sleeve and Spool Set	1
(Includes on other items on 031-166-000 above)			



ATEX Compliant

AIR DISTRIBUTION VALVE SERVICING

To service the air valve first shut off the compressed air, bleed pressure from the pump, and disconnect the air supply line from the pump.

STEP #1: See COMPOSITE REPAIR PARTS DRAWING.

Using a 3/8" wrench or socket, remove the four hex flanged capscrews (item 12). Remove the air valve assembly from the pump.

STEP #2: Disassembly of the air valve.

To access the internal air valve components first remove the two end cap retainers (item 1-G) by inserting a small flat screwdriver into the two slotted grooves on the valve body and gently lifting the retainers out.

Next remove the two end caps (item 1-E) by grasping the pull tab with finger and thumb or pliers and tugging. Inspect the two o-rings (items 1-C and 1-F) on each end cap for wear or cuts. Replace the o-rings if necessary.

Remove the spool (part of item 1-B) from the sleeve. Be careful not to scratch or damage the outer diameter of the spool. Wipe spool with a soft clean cloth and inspect for scratches or abrasive wear.

Inspect the inner diameter of the sleeve (part of item 1-B) for dirt, scratches, or other contaminants. Remove the sleeve if needed and replace with a new sleeve and spool set (item 1-B). **Note:** The sleeve and spool set is match-ground to a specified clearance. Sleeves and spools cannot be interchanged.

STEP #3: Reassembly of the air distribution valve.

Install one end cap with o-rings (items 1-E, 1-C, and 1-F) into one end of the air valve body (item 1-A). Insert one end cap retainer (item 1-G) into the two smaller holes, align with groove in the end cap, and push until the closed end of the retainer is below the flat surface of the valve body.

Remove the new sleeve and spool set (item 1-B) from the plastic bag. Carefully remove the spool from the sleeve. Install the six o-rings (item 1-C) into the six grooves on the sleeve. Apply a light coating of grease to the o-rings before installing the sleeve into the valve body. Align the slots in the sleeve with the slots in the valve body. Insert the spool into the sleeve. Be careful not to scratch or damage the spool during installation. Push the spool in until the pin touches the end cap on the opposite end.

Install the remaining end cap with o-rings and retainer.

Fasten the air valve assembly (item 1) and gasket (item 23) to the pump, using the four hex flanged capscrews (item 12).

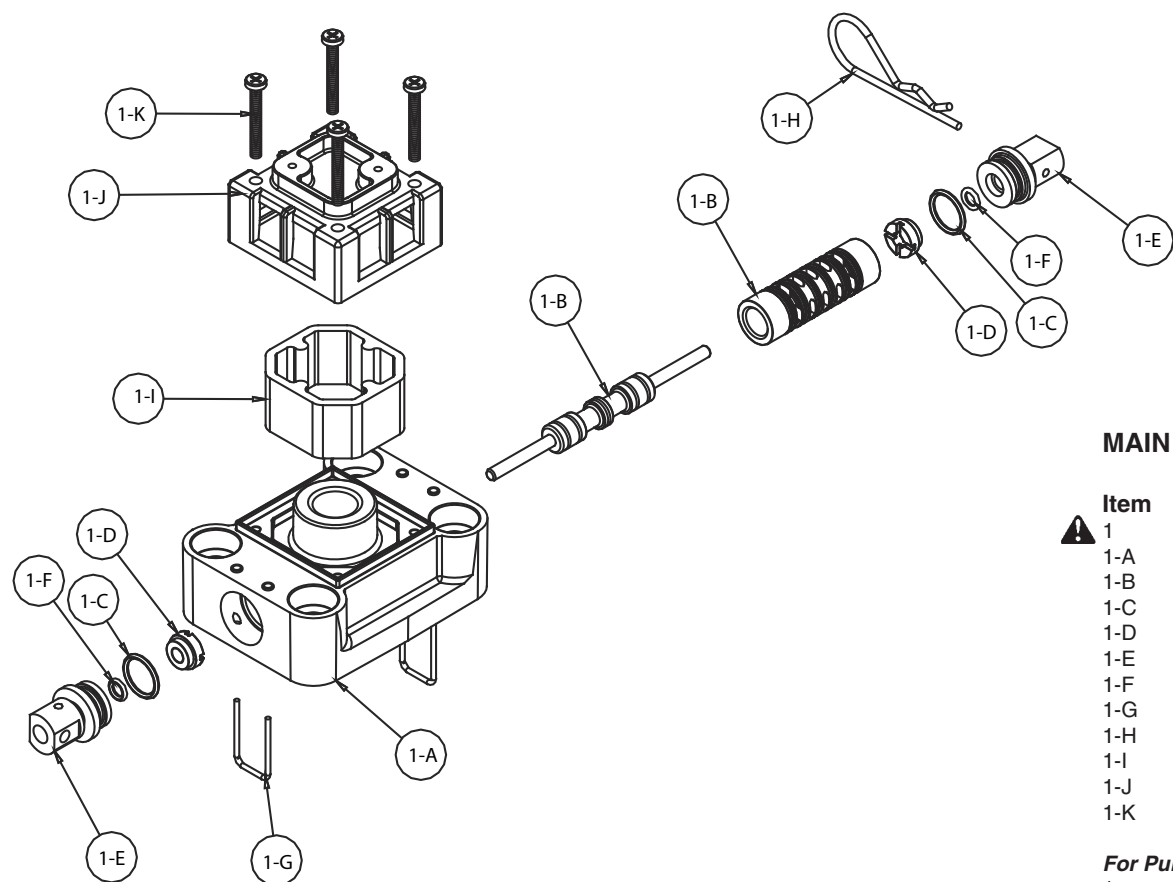
Connect the compressed air line to the pump. The pump is now ready for operation.



! IMPORTANT

Read these instructions completely, before installation and start-up. It is the responsibility of the purchaser to retain this manual for reference. Failure to comply with the recommendations stated in this manual will damage the pump, and void factory warranty.

Air Valve with Stroke Indicator Assembly Drawing, Parts List



MAIN AIR VALVE ASSEMBLY PARTS LIST

Item	Part Number	Description	Qty
⚠ 1	031-167-000	Air Valve Assembly	1
1-A	095-106-559	Body, Air Valve	1
1-B	031-134-000	Sleeve and Spool Set	1
1-C	560-101-360	O-Ring	8
1-D	132.030.552	Bumper	2
1-E	165-123-147	End Cap	2
1-F	560-029-360	O-Ring	2
1-G	675-062-115	End Cap Retainer	2
1-H	210-008-330	Safety Clip	1
1-I	530-031-550	Muffler	1
1-J	165-109-559	Muffler Cap	1
1-K	710-011-115	Self-Tapping Screw	4

For Pumps with Virgin PTFE coated hardware:

1	031-167-002	Air Valve Assembly	1
1-G	675-062-308	End Cap Retainer	2
1-J	710-011-308	Self Tapping Screw	4

(Includes all other items used on 031-166-000 above)

For Pumps with alternate Mesh Muffler or Piped Exhaust:

⚠ 1	031-169-000	Air Valve Assembly	1
-----	-------------	--------------------	---

(Includes all items used on 031-167-000 above minus 1-H, 1-I and 1-J)



AIR DISTRIBUTION VALVE WITH STROKE INDICATOR OPTION SERVICING

To service the air valve first shut off the compressed air, bleed pressure from the pump, and disconnect the air supply line from the pump.

STEP #1: See COMPOSITE REPAIR PARTS DRAWING.

Using a 3/8" wrench or socket, remove the four hex flanged capscrews (item 12). Remove the air valve assembly from the pump.

STEP #2: Disassembly of the air valve.

To access the internal air valve components first remove the two end cap retainers (item 1-G) by inserting a small flat screwdriver into the two slotted grooves on the valve body and gently lifting the retainers out.

Next remove the two end caps (item 1-E) by grasping the pull tab with finger and thumb or pliers and tugging. Inspect the two o-rings (items 1-C and 1-F) on each end cap for wear or cuts. Replace the o-rings if necessary.

Remove the spool (part of item 1-B) from the sleeve. Be careful not to scratch or damage the outer diameter of the spool. Wipe spool with a soft clean cloth and inspect for scratches or abrasive wear.

Inspect the inner diameter of the sleeve (part of item 1-B) for dirt, scratches, or other contaminants. Remove the sleeve if needed and replace with a new sleeve and spool set (item 1-B). **Note:** The sleeve and spool set is match-ground to a specified clearance. Sleeves and spools cannot be interchanged.

STEP #3: Reassembly of the air distribution valve.

Install one end cap with o-rings (items 1-E, 1-C, and 1-F) into one end of the air valve body (item 1-A). Insert one end cap retainer (item 1-G) into the two smaller holes, align with groove in the end cap, and push until the closed end of the retainer is below the flat surface of the valve body.

Remove the new sleeve and spool set (item 1-B) from the plastic bag. Carefully remove the spool from the sleeve. Install the six o-rings (item 1-C) into the six grooves on the sleeve. Apply a light coating of grease to the o-rings before installing the sleeve into the valve body. Align the slots in the sleeve with the slots in the valve body. Insert the spool into the sleeve. Be careful not to scratch or damage the spool during installation. Push the spool in until the pin touches the end cap on the opposite end.

Install the remaining end cap with o-rings and retainer.

Fasten the air valve assembly (item 1) and gasket (item 23) to the pump, using the four hex flanged capscrews (item 12).

Connect the compressed air line to the pump. The pump is now ready for operation.

IMPORTANT: Remove the safety clip. The pump will not function properly until it is removed. The pump is now ready for operation.



! IMPORTANT

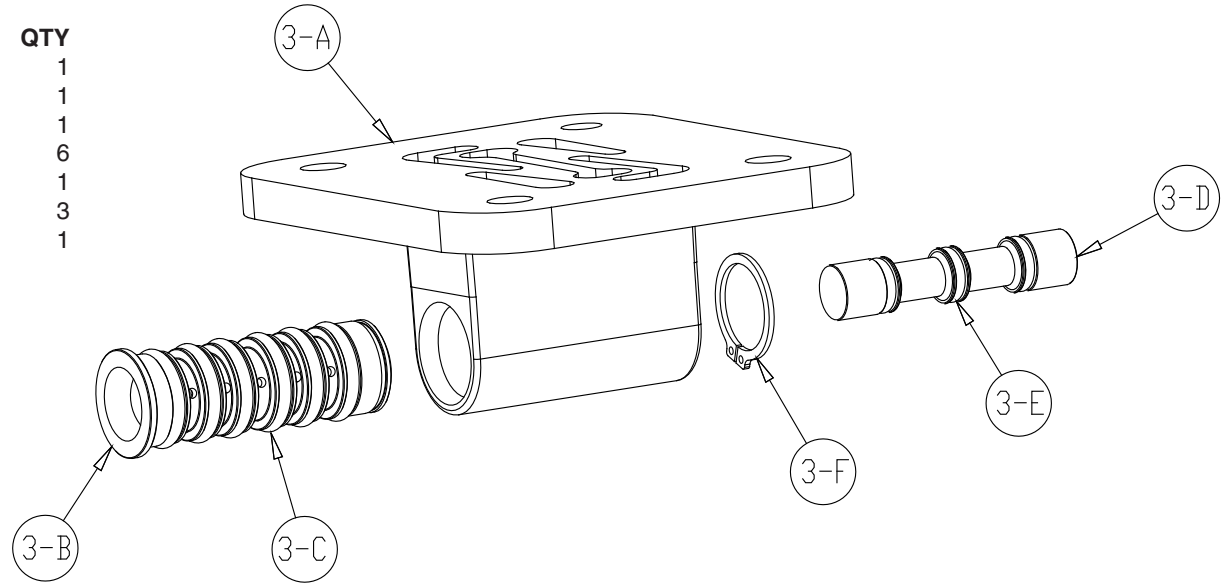
Read these instructions completely, before installation and start-up. It is the responsibility of the purchaser to retain

this manual for reference. Failure to comply with the recommendations stated in this manual will damage the pump, and void factory warranty.

Pilot Valve Servicing, Assembly Drawing & Parts List

PILOT VALVE ASSEMBLY PARTS LIST

ITEM	PART NUMBER	DESCRIPTION	QTY
3	095-091-000	Pilot Valve Assembly	1
3-A	095-087-551	Valve Body	1
3-B	755-051-000	Sleeve (With O-rings)	1
3-C	560-033-360	O-ring (Sleeve)	6
3-D	775-055-000	Spool (With O-rings)	1
3-E	560-023-360	O-ring (Spool)	3
3-F	675-037-080	Retaining Ring	1



PILOT VALVE SERVICING

To service the pilot valve first shut off the compressed air supply, bleed the pressure from the pump, and disconnect the air supply line from the pump.

STEP #1: See pump assembly drawing.

Using a 7/16" wrench or socket, remove the four capscrews (item 12). Remove the air inlet cap (item 8) and air inlet gasket (item 20). The pilot valve assembly (item 3) can now be removed for inspection and service.

STEP #2: Disassembly of the pilot valve.

Remove the pilot valve spool (item 3-D). Wipe clean and inspect spool and o-rings for dirt, cuts or wear. Replace the o-rings and spool if necessary.

Remove the retaining ring (item 3-F) from the end of the sleeve (item 3-b) and remove the sleeve from the valve body (item 3-A). Wipe clean and inspect sleeve and o-rings for dirt, cuts or wear. Replace the o-rings and sleeve if necessary.

STEP #3: Re-assembly of the pilot valve.

Generously lubricate outside diameter of the sleeve and o-rings. Then carefully insert sleeve into valve body. Take CAUTION when inserting sleeve, not to shear any o-rings. Install retaining ring to sleeve. Generously lubricate outside diameter of spool and o-rings. Then carefully insert spool into sleeve. Take CAUTION when inserting spool, not to shear any o-rings. Use BP-LS-EP-2 multipurpose grease, or equivalent.

STEP #4: Re-install the pilot valve assembly into the intermediate.

Be careful to align the ends of the pilot valve stem between the plunger pins when inserting the pilot valve into the cavity of the intermediate.

Re-install the gasket, air inlet cap and capscrews. Connect the air supply to the pump. The pump is now ready for operation.


Solenoid Shifted Air Valve Drawing

 **Note:** Pumps equipped with Explosion-Proof Solenoid Coils are ATEX compliant.

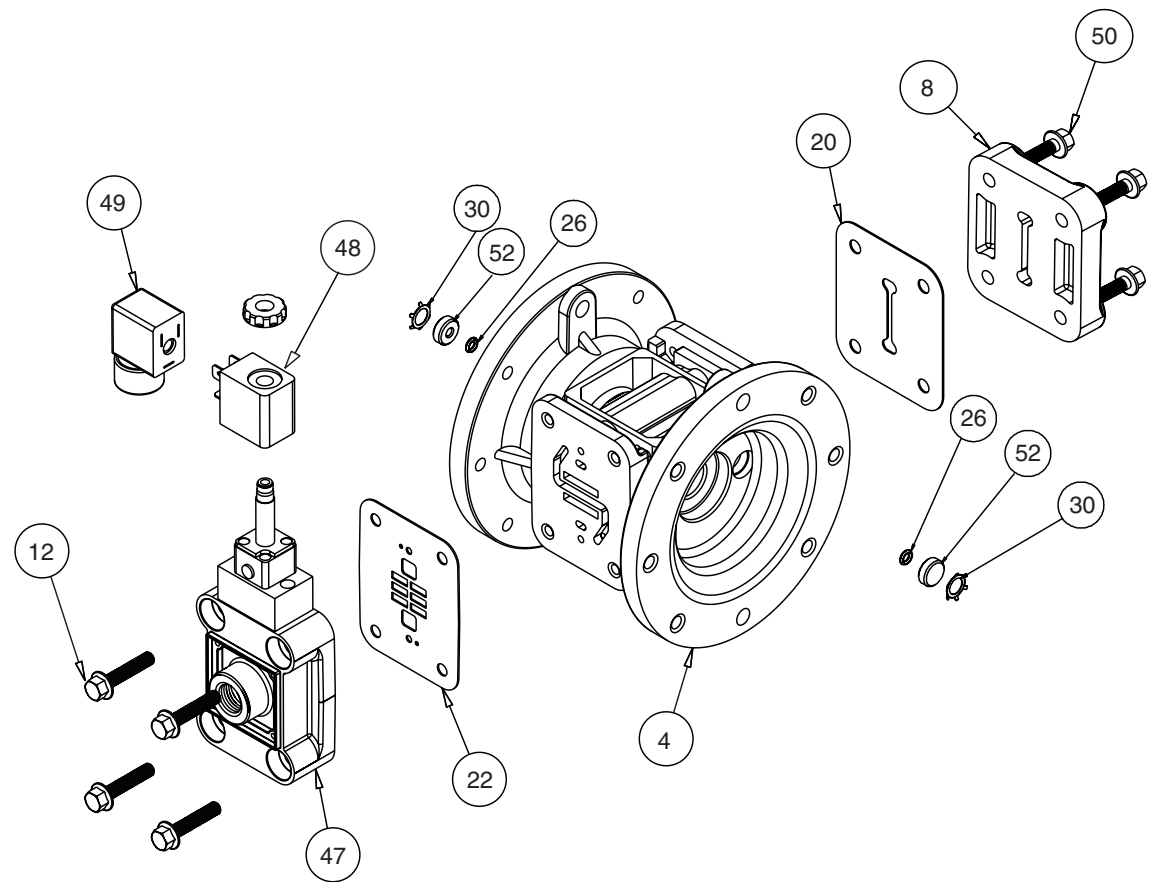
SOLENOID SHIFTED AIR VALVE PARTS LIST

(Includes all items used on Composite Repair Parts List except as shown)

Item	Part Number	Description	Qty
4	114-023-551	Bracket, Intermediate	1
47	893-099-000	Solenoid Valve, NEMA4	1
48	219-001-000	Solenoid Coil, 24VDC	1
	219-004-000	Solenoid Coil, 24/120VDC	1
	219-002-000	Solenoid Coil, 120VAC	1
	219-003-000	Solenoid Coil, 240VAC	1
49	241-001-000	Connector, conduit	1
	241-003-000	Conduit Connector with Suppression Diode (DC Only)	1
50	170-065-115	Capscrew, Flanged 1/4-20 x 1.00	4
52	618-050-150	Plug (Replaces Item 7)	2

 **For Explosion Proof Solenoid Coils**

48	219-009-001	Solenoid Coil, 120VDC 60 Hz	1
	219-009-002	Solenoid Coil, 240VDC 60 Hz	1
	219-009-003	Solenoid Coil, 12VDC	1
	219-009-004	Solenoid Coil, 24VDC	1
	219-009-005	Solenoid Coil, 110VDC 50 Hz	1
	219-009-006	Solenoid Coil, 230VDC 50 Hz	1



SOLENOID SHIFTED AIR DISTRIBUTION VALVE OPTION

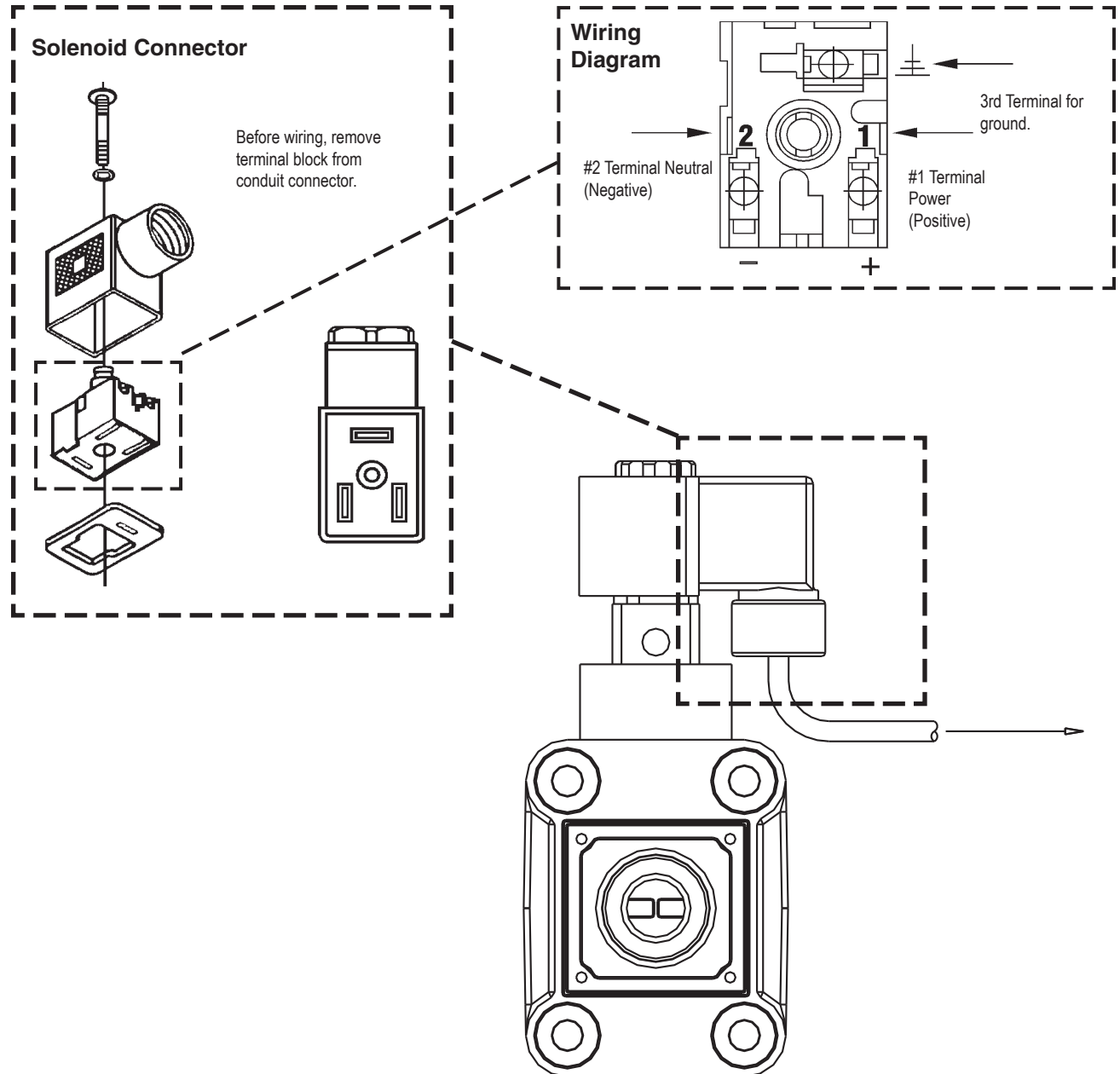
Warren Rupp's solenoid shifted, air distribution valve option utilizes electrical signals to precisely control your SANDPIPER's speed. The solenoid coil is connected to a customer - supplied control. Compressed air provides the pumping power, while electrical signals control pump speed (pumping rate).

OPERATION

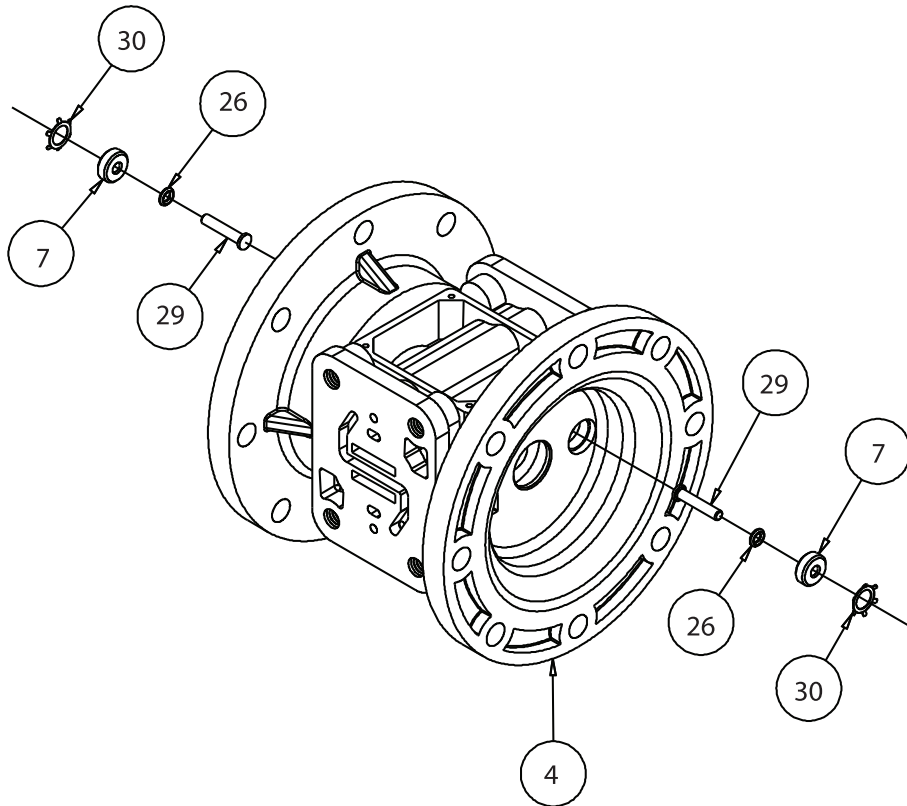
The Solenoid Shifted SANDPIPER has a solenoid operated, air distribution valve in place of the standard SANDPIPER's pilot operated, air distribution valve. Where a pilot valve is normally utilized to cycle the pump's air distribution valve, an electric solenoid is utilized. As the solenoid is powered, one of the pump's air chambers is pressurized while the other chamber is exhausted. When electric power is turned off, the solenoid shifts and the pressurized chamber is exhausted while the other chamber is pressurized. By alternately applying and removing power to the solenoid, the pump cycles much like a standard SANDPIPER pump, with one exception. This option provides a way to precisely control and monitor pump speed.

BEFORE INSTALLATION

BEFORE WIRING THE SOLENOID, make certain it is compatible with your system voltage.



Intermediate Assembly Drawing



INTERMEDIATE REPAIR PARTS LIST

Item	Part Number	Description	Qty
4	114-023-551	Bracket, Intermediate	1
	114-023-559	Bracket, Intermediate	1
7	135-036-506	Bushing, Plunger	2
26	560-001-360	O-Ring	2
29	620-019-115	Plunger, Actuator	2
30	675-042-115	Ring, Retaining*	2

***Note:** It is recommended that when plunger components are serviced, new retaining rings be installed.

Intermediate Assembly Servicing

ACTUATOR PLUNGER SERVICING

To service the actuator plunger first shut off the compressed air supply, bleed the pressure from the pump, and disconnect the air supply line from the pump.

Step #1: See PUMP ASSEMBLY DRAWING.

Using a 3/8" wrench or socket, remove the four capscrews (items 12). Remove the air inlet cap (item 8) and air inlet gasket (item 20). The pilot valve assembly (item 3) can now be removed.

Step #2: Servicing the actuator plungers. See PUMP ASSEMBLY DRAWING.

The actuator plungers (items 29) can be reached through the stem cavity of the pilot valve in the intermediate bracket (item 4). To service bushings, o-rings and retaining rings, see Intermediate Drawing.

Remove the plungers (items 29) from the bushings (item 7) in each end of the intermediate cavity. Inspect for wear or damage. Replace plunger as needed. Apply a light coating of grease to each o-ring and re-install the plungers in to the bushings. Push the plungers in as far as they will go.

Step #3: Re-install the pilot valve assembly into the intermediate assembly.

Be careful to align the ends of the stem between the plungers when inserting the stem of the pilot valve into the cavity of the intermediate.

Re-install the gasket (item 20), air inlet cap (item 8) and capscrews (items 12).

Connect the air supply to the pump. The pump is now ready for operation.

PLUNGER BUSHING, O-RING, AND RETAINING RING SERVICING

To service the plunger components first remove the two retaining rings (items 30) using a small flat screwdriver. ***Note:** It is recommended that new retaining rings be installed.

Next remove the two plunger bushings (items 7). Inspect the bushings for wear or scratches. Replace the bushings as necessary.

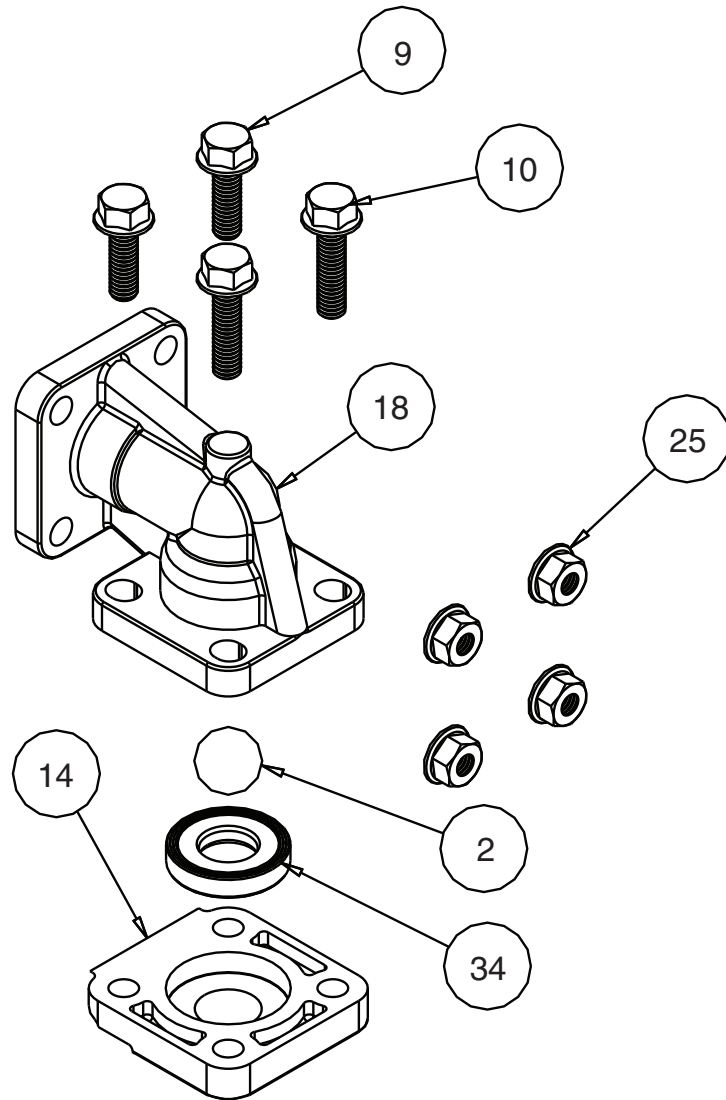
Inspect the two o-rings (26) for cuts and/or wear.



! IMPORTANT

Read these instructions completely, before installation and start-up. It is the responsibility of the purchaser to retain this manual for reference. Failure to comply with the recommendations stated in this manual will damage the pump, and void factory warranty.

Check Ball Valve Drawing



MODULAR CHECK BALL VALVE SERVICING

Before servicing the check valves, first shut off the suction line and then the discharge line to the pump. Next, shut off the compressed air supply, bleed air pressure from the pump, and disconnect the air supply line from the pump. Drain any remaining fluid from the pump. The pump can now be removed for service.

To access the modular check valve, remove the elbows (items 17 and 18 from pump composite repair parts drawing). Use a 1/2" wrench or socket to remove the fasteners. Once the elbows are removed, the modular check valves can be seen in the cavities of the outer chamber (items 14).


Inspect the check balls (items 2) for wear, abrasion, or cuts on the spherical surface. The check valve seats (items 34) should be inspected for cuts, abrasive wear, or embedded material on the surfaces of both the external and internal chamfers. The spherical surface of the check balls must seat flush to the surface of the inner chamfer on the check valve seats for the pump to operate to peak efficiency. Replace any worn or damaged parts as necessary.

RE-ASSEMBLE THE CHECK VALVE

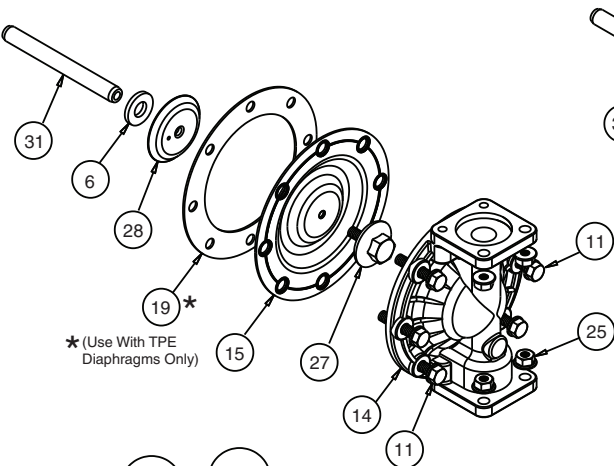
Place a check ball (item 2) in the ball cage of either the discharge elbow or the outer chamber. Install a check valve seat in the counter on each end of the chamber. Refasten the elbows to the chamber.



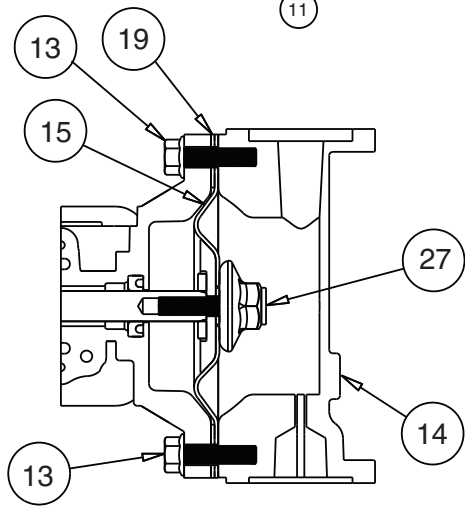
! IMPORTANT

 **Read these instructions completely, before installation and start-up. It is the responsibility of the purchaser to retain this manual for reference. Failure to comply with the recommendations stated in this manual will damage the pump, and void factory warranty.**

Diaphragm Service Drawing

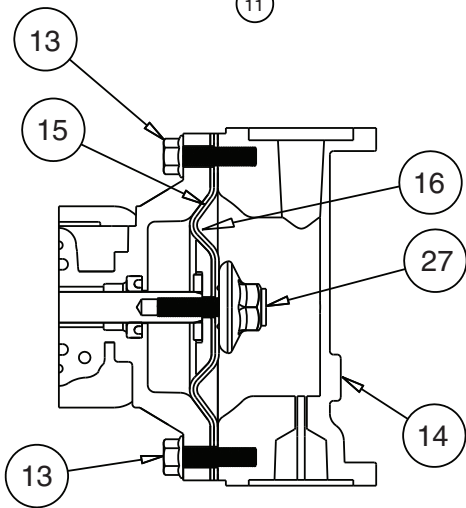
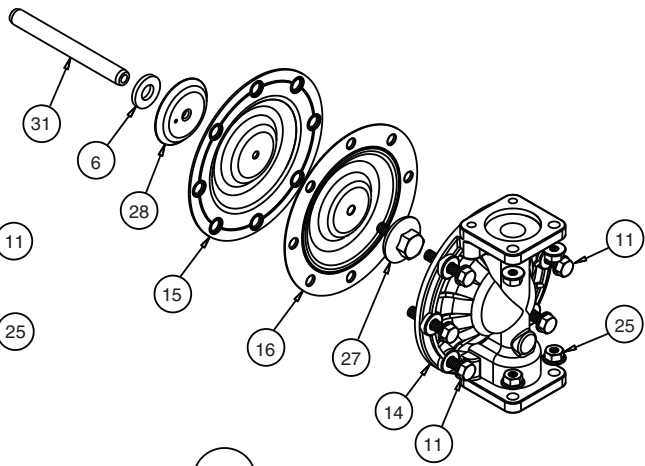


★ (Use With TPE Diaphragms Only)



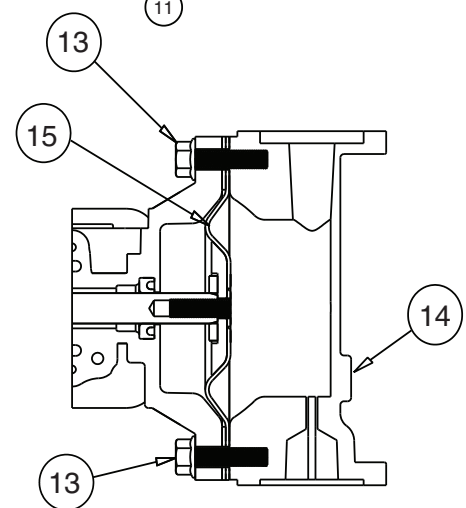
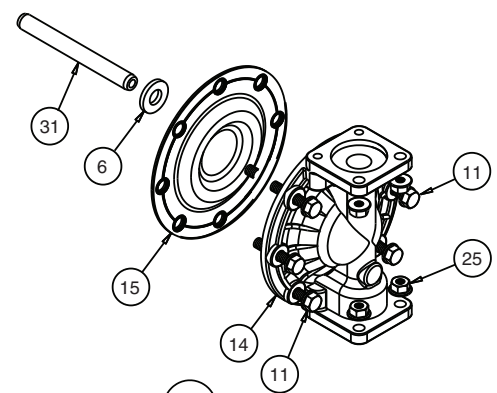
Diaphragm Orientation
Install diaphragm and spacer as shown above.

Diaphragm Service Drawing, with Overlay



Diaphragm Orientation
Install diaphragm and overlay as shown above.

Diaphragm Service Drawing with One-Piece Bonded



Diaphragm Orientation
Install diaphragm (286-116-000 only) as shown above.

DIAPHRAGM SERVICING

To service the diaphragms first shut off the suction, then shut off the discharge lines to the pump. Shut off the compressed air supply, bleed the pressure from the pump, and disconnect the air supply line from the pump. Drain any remaining liquid from the pump.

Step #1: See the pump composite repair parts drawing, and the diaphragm servicing illustration.

Using a 1/2" wrench or socket, remove the 16 capscrews (items 9 & 10), and flanged nuts that fasten the elbows (items 17 and 18) to the outer chambers (items 14). Remove the elbows with the manifolds and spacers attached.

Step #2: Removing the outer chambers.

Using a 1/2" wrench or socket, remove the 16 capscrews (items 11 and 13), and flanged nuts that fasten the outer chambers, diaphragms, and intermediate (item 4) together.

Step #3: Removing the diaphragm assemblies.

Use a 3/4" (19mm) wrench or six pointed socket to remove the diaphragm assemblies (outer plate, diaphragm, and inner plate) from the diaphragm rod (item 32) by turning counterclockwise.

Insert a 6-32 set screw into the smaller tapped hole in the inner diaphragm plate (item 28). Insert the protruding stud and the 6-32 fastener loosely into a vise. Use a

3/4" wrench or socket to remove the outer diaphragm plate (item 27) by turning counterclockwise. Inspect the diaphragm (item 15) for cuts, punctures, abrasive wear or chemical attack. Replace the diaphragms if necessary.

Step #4: Installing the diaphragms.

Push the threaded stud of the outer diaphragm plate through the center hole of the diaphragm. Thread the inner plate clockwise onto the stud. Insert the loose assembly with the above 6-32 fastener back into the vise. Use a torque wrench to tighten the diaphragm assembly together to 90 in lbs. (10.17 Newton meters) 120 in lbs. Santoprene (13.56 Newton meters). Allow a minimum of 15 minutes to elapse after torquing, then re-torque the assembly to compensate for stress relaxation in the clamped assembly.

Step #5: Installing the diaphragm assemblies to the pump.

Make sure the bumper (item 6) is installed over the diaphragm rod.

Thread the stud of the one diaphragm assembly clockwise into the tapped hole at the end of the diaphragm rod (item 31) until the inner diaphragm plate is flush to the end of the rod. Insert rod into pump.

Align the bolt holes in the diaphragm with the bolt pattern in the intermediate (item 4).

Fasten the outer chamber (item 14) to the pump, using the capscrews (items 11 and 13) and flanged nuts.

On the opposite side of the pump, pull the diaphragm rod out as far as

possible. Make sure the bumper (item 6) is installed over the diaphragm rod.

Thread the stud of the remaining diaphragm assembly clockwise into the tapped hole at the end of the diaphragm rod (item 31) as far as possible and still allow for alignment of the bolt holes in the diaphragm with the bolt pattern in the inner chamber. Install diaphragms with convolutions facing towards center of pump. See sectional view on previous page.

Fasten the remaining outer chamber (item 14) to the pump, using the capscrews (items 11 and 13) and flanged nuts.

Step #6: Re-install the elbow/spacer/manifold assemblies to the pump, using the capscrews (items 9 & 10) and flanged nuts.

The pump is now ready to be re-installed, connected and returned to operation.

OVERLAY DIAPHRAGM SERVICING

The overlay diaphragm (item 16) is designed to fit snugly over the exterior of the standard TPE diaphragm (item 15).

ONE PIECE DIAPHRAGM SERVICING

(Bonded PTFE with intergral plate)
The One Piece diaphragm has a treaded stud installed in the intergral plate at the factory. The inner diaphragm plate has a through hole instead of a threaded hole.

Place the inner plate over the diaphragm stud and thread the first diaphragm / inner plate onto the diaphragm rod only until the inner plate contacts the rod. Do not tighten.

A small amount of grease may be applied between the inner plate and the diaphragm to facilitate assembly.

Insert the diaphragm / rod assembly into the pump and install the outer chamber. Turn the pump over and thread the second diaphragm / inner plate onto the diaphragm rod. Turn the diaphragm until the inner plate contacts the rod and hand tighten the assembly. Continue tightening until the bolt holes align with the inner chamber holes. **DO NOT LEAVE THE ASSEMBLY LOOSE.**



! IMPORTANT

Read these instructions completely, before installation and start-up. It is the responsibility of the purchaser to retain this manual for reference. Failure to comply with the recommendations stated in this manual will damage the pump, and void factory warranty.

Dual Port Option Drawing

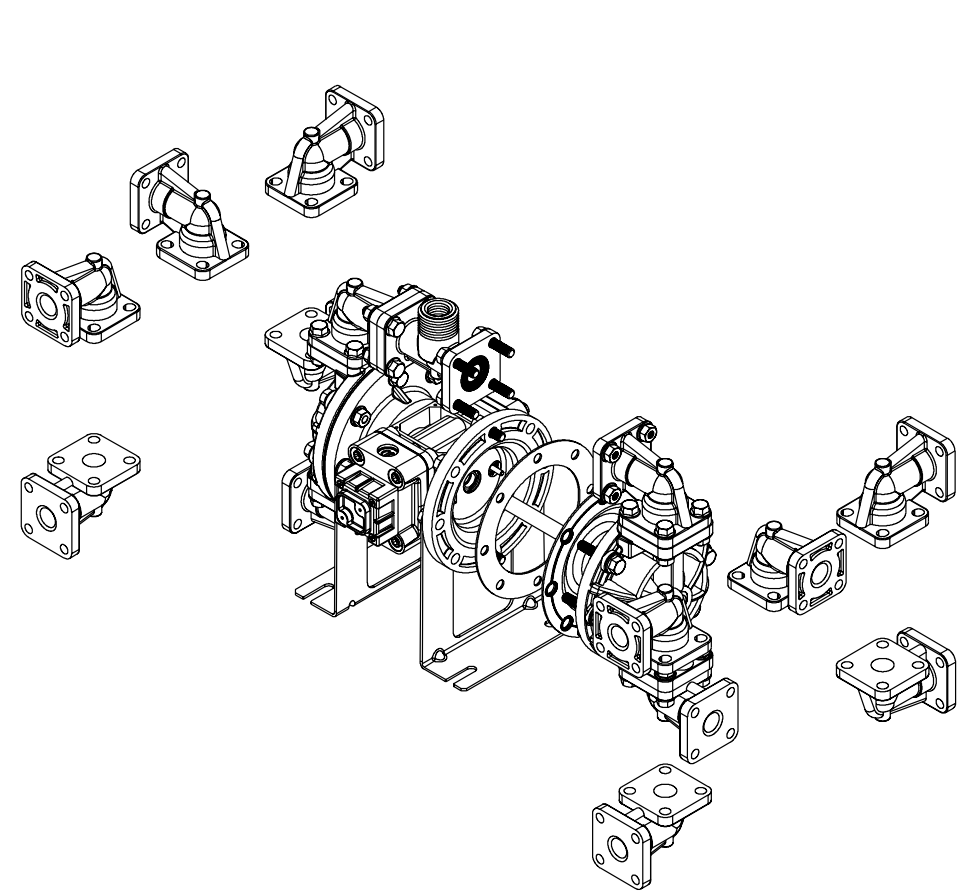


Illustration for Single Port Suction
with Dual Port Discharge

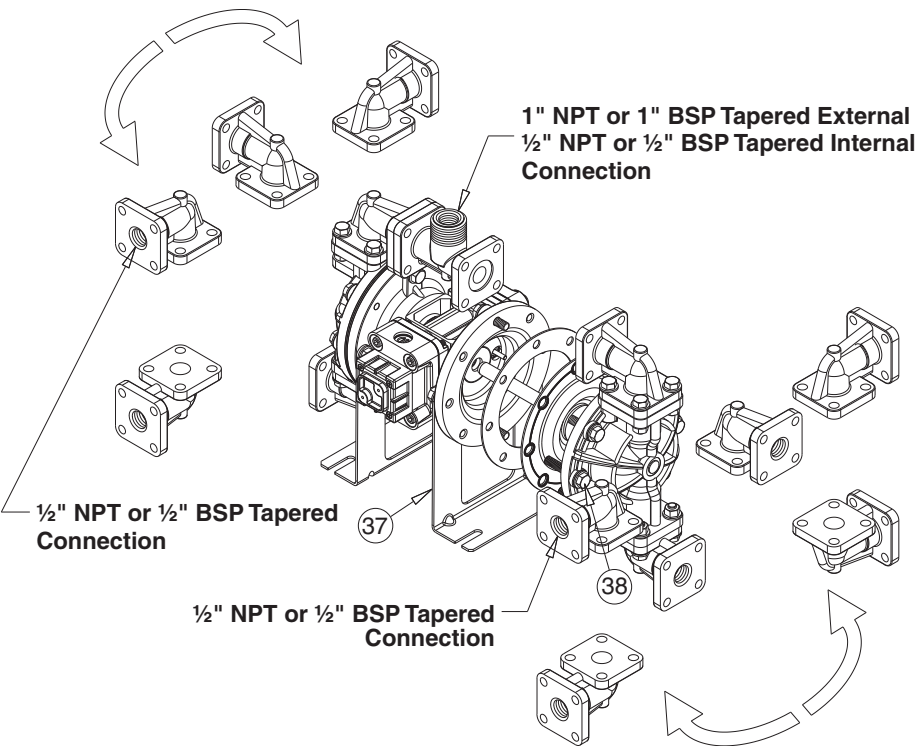


Illustration for Dual Port Suction
and Single or Dual Port Discharge

DUAL PORTING OPTIONS

Several dual porting options are possible. The pump can be converted to a dual port arrangement on both the suction and the discharge ends. The porting can be configured to a single suction and a dual discharge. The porting can be changed to a dual suction and a single discharge.

The above changes are possible because the porting flange of the elbows (items 17 & 18) are designed to mate with ½" NPT or 1/2" BSP (Tapered) connection.

DUAL PORTING OF BOTH SUCTION AND DISCHARGE ENDS OF THE PUMP

Converting the pump from the standard single suction and discharge porting configuration to dual porting at each end is easy. Simply remove the manifold seals and manifolds (items 33 and 23 from pump assembly drawing) from the pump.

The discharge elbows and suction elbows can be rotated 90° increments (see arrows and optional positioning in the Dual Porting Drawing.

SINGLE PORTING OF THE SUCTION AND DUAL PORTING OF THE PUMP DISCHARGE

To convert the pump from the standard single suction and single discharge porting configuration to a dual discharge porting arrangement remove the only the discharge manifolds and manifold seals. Position the discharge elbows in the desired direction at 90° increments. (See arrows and optional positioning in the Dual Porting Drawing.)

DUAL PORTING OF THE SUCTION AND SINGLE PORTING OF THE PUMP DISCHARGE

To convert the pump from the standard single suction and single discharge porting configuration to a dual suction porting arrangement remove the only the suction (bottom) manifolds and manifold seals.

Position the suction elbows in the desired direction at 90° increments. (See arrows and optional positioning in the Dual Porting Drawing.)

NOTE: See Repair Parts List on next page.



! IMPORTANT

Read these instructions completely, before installation and start-up. It is the responsibility of the purchaser to retain this manual for reference. Failure to comply with the recommendations stated in this manual will damage the pump, and void factory warranty.

SINGLE PORT SUCTION REPAIR PARTS LIST

Item	Part Number	Description	Qty
10*	171-063-115	Capscrew, Flanged 5/16-18 x 1.25	16
	171-063-308	Capscrew, Flanged 5/16-18 x 1.25	16
18	312-112-520N	Elbow, ½NPT (replaces 312-112-520)	2
	⚠ 312-112-521N	Elbow, ½NPT (replaces 312-112-521)	2
	312-112-542N	Elbow, ½NPT (replaces 312-112-542)	2
	312-112-552N	Elbow, ½NPT (replaces 312-112-552)	2
	⚠ 312-112-557N	Elbow, ½NPT (replaces 312-112-557)	2
23	518-138-520	Manifold (installed in bottom position) NPT	1
	518-138-520E	Manifold (installed in bottom position) BSP Tapered	1
	⚠ 518-138-521	Manifold (installed in bottom position) NPT	1
	⚠ 518-138-521E	Manifold (installed in bottom position) BSP Tapered	1
	518-138-542	Manifold (installed in bottom position) NPT	1
	518-138-542E	Manifold (installed in bottom position) BSP Tapered	1
	518-138-552	Manifold (installed in bottom position) NPT	1
	518-138-552E	Manifold (installed in bottom position) BSP Tapered	1
	⚠ 518-138-557	Manifold (installed in bottom position) NPT	1
	⚠ 518-138-557E	Manifold (installed in bottom position) BSP Tapered	1
25*	544-005-115	Nut, Flanged 5/16-18	28
	544-005-308	Nut, Flanged 5/16-18	28

SINGLE PORT DISCHARGE REPAIR PARTS LIST

10*	171-063-115	Capscrew, Flanged 5/16-18 x 1.25	16
	171-063-308	Capscrew, Flanged 5/16-18 x 1.25	16
11*	171-064-115	Capscrew, Flanged HD 5/16-18 X 1.50	4
	171-064-308	Capscrew, Flanged HD 5/16-18 X 1.50	4
17*	312-106-520N	Elbow, ½NPT (replaces 312-106-520)	2
	⚠ 312-106-521N	Elbow, ½NPT (replaces 312-106-521)	2
	312-106-542N	Elbow, ½NPT (replaces 312-106-542)	2
	312-106-552N	Elbow, ½NPT (replaces 312-106-552)	2
	⚠ 312-106-557N	Elbow, ½NPT (replaces 312-106-557)	2
23*	518-138-520	Manifold (installed in top position) NPT	1
	518-138-520E	Manifold (installed in top position) BSP Tapered	1
	⚠ 518-138-521	Manifold (installed in top position) NPT	1
	⚠ 518-138-521E	Manifold (installed in top position) BSP Tapered	1
	518-138-542	Manifold (installed in top position) NPT	1
	518-138-542E	Manifold (installed in top position) BSP Tapered	1
	518-138-552	Manifold (installed in top position) NPT	1
	518-138-552E	Manifold (installed in top position) BSP Tapered	1
	⚠ 518-138-557	Manifold (installed in top position) NPT	1
	⚠ 518-138-557E	Manifold (installed in top position) BSP Tapered	1

25*	544-005-115	Nut, Flanged 5/16-18	28
	544-005-308	Nut, Flanged 5/16-18	28
37	115-144-305	Bracket, Free Standing (replaces 115-140-115)	2
	115-144-306	Bracket, Free Standing (replaces 115-140-115)	2
38	171-068-115	Capscrew, Flanged 5/16-18 X 1.63	8
	171-068-308	Capscrew, Flanged 5/16-18 X 1.63	8

DUAL PORT SUCTION AND DISCHARGE REPAIR PARTS LIST

Item	Part Number	Description	Qty
10*	171-063-115	Capscrew, Flanged 5/16-18 x 1.25	8
	171-063-308	Capscrew, Flanged 5/16-18 x 1.25	8
11*	171-064-115	Capscrew, Flanged HD 5/16-18 X 1.50	4
	171-064-308	Capscrew, Flanged HD 5/16-18 X 1.50	4
17	312-106-520N	Elbow, ½NPT (replaces 312-106-520)	2
	⚠ 312-106-521N	Elbow, ½NPT (replaces 312-106-521)	2
	312-106-542N	Elbow, ½NPT (replaces 312-106-542)	2
	312-106-552N	Elbow, ½NPT (replaces 312-106-552)	2
	⚠ 312-106-557N	Elbow, ½NPT (replaces 312-106-557)	2
18	312-112-520N	Elbow, ½NPT (replaces 312-112-520)	2
	⚠ 312-112-521N	Elbow, ½NPT (replaces 312-112-521)	2
	312-112-542N	Elbow, ½NPT (replaces 312-112-542)	2
	312-112-552N	Elbow, ½NPT (replaces 312-112-552)	2
	⚠ 312-112-557N	Elbow, ½NPT (replaces 312-112-557)	2
23*	518-138-520	Manifold (none required)	
	518-138-520E	Manifold (none required)	
	⚠ 518-138-521	Manifold (none required)	
	⚠ 518-138-521E	Manifold (none required)	
	518-138-542	Manifold (none required)	
	518-138-542E	Manifold (none required)	
	518-138-552	Manifold (none required)	
	518-138-552E	Manifold (none required)	
	⚠ 518-138-557	Manifold (none required)	
	⚠ 518-138-557E	Manifold (none required)	
25*	544-005-115	Nut, Flanged 5/16-18	20
	544-005-308	Nut, Flanged 5/16-18	20
37	115-144-305	Bracket, Free Standing (replaces 115-140-115)	2
	115-144-306	Bracket, Free Standing (replaces 115-140-115)	2
38	171-068-115	Capscrew, Flanged 5/16-18 X 1.63	8
	171-068-308	Capscrew, Flanged 5/16-18 X 1.63	8

**ATEX Compliant****Quantities change from Composite Repair Parts List.*

PUMPING HAZARDOUS LIQUIDS

When a diaphragm fails, the pumped liquid or fumes enter the air end of the pump. Fumes are exhausted into the surrounding environment. When pumping hazardous or toxic materials, the exhaust air must be piped to an appropriate area for safe disposal. See illustration #1 at right.

This pump can be submerged if the pump materials of construction are compatible with the liquid being pumped. The air exhaust must be piped above the liquid level. See illustration #2 at right. Piping used for the air exhaust must not be smaller than 3/8" diameter. Reducing the pipe size will restrict air flow and reduce pump performance. When the pumped product source is at a higher level than the pump (flooded suction condition), pipe the exhaust higher than the product source to prevent siphoning spills. See illustration #3 at right.

CONVERTING THE PUMP FOR PIPING THE EXHAUST AIR

The following steps are necessary to convert the pump to pipe the exhaust air away from the pump.

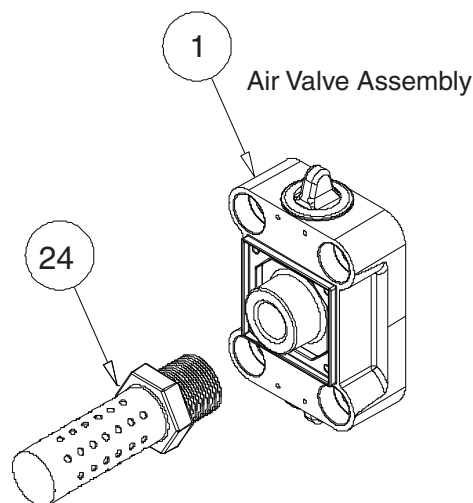
Use a #8 Torx or flat screwdriver to remove the four self-tapping screws (item 1-J) (Plastic Valves). Use a Phillips screwdriver to remove four machine screws (item 1-I) (Aluminum Valves).

Remove the muffler cap and muffler. The air distribution valve body has 3/8" NPT threads for installation of alternate mesh or sound dampening mufflers or piped exhaust.

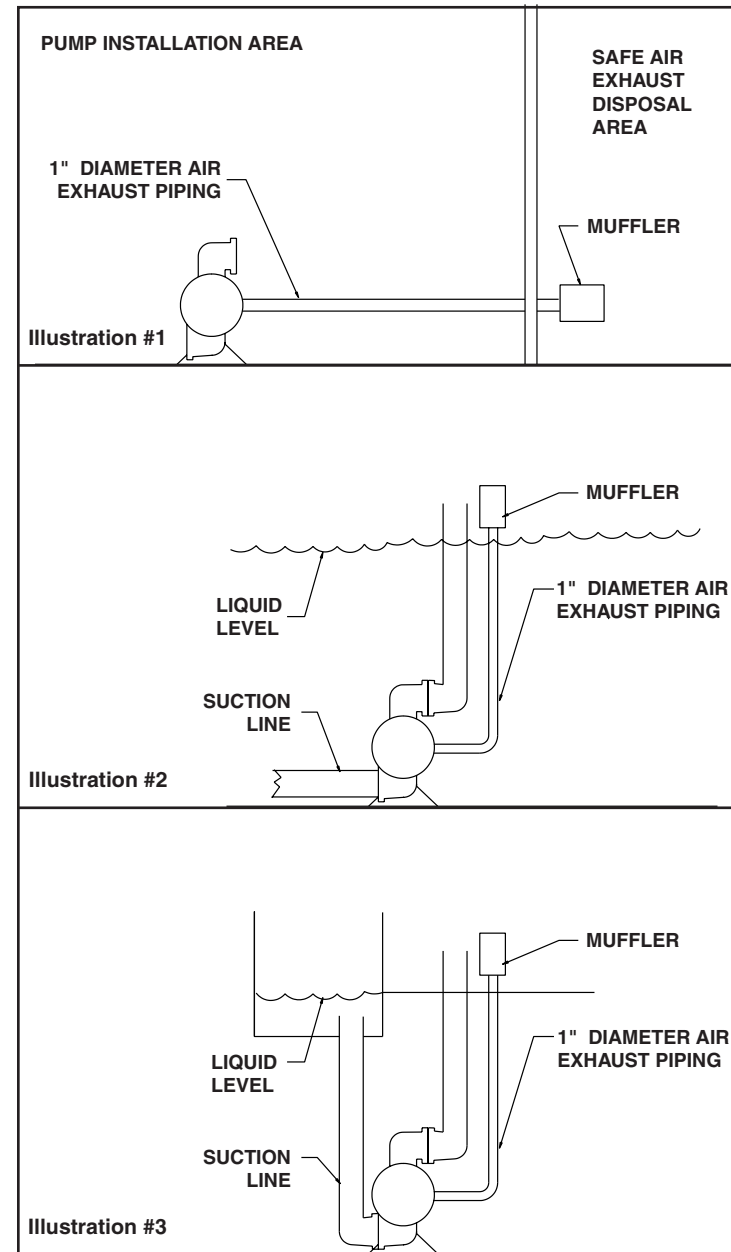
IMPORTANT INSTALLATION NOTE:

The manufacturer recommends installing a flexible hose or connection between the pump and any rigid plumbing. This reduces stresses on the molded plastic threads of the air exhaust port. Failure to do so may result in damage to the air distribution valve body.

Any piping or hose connected to the pump's air exhaust port must be physically supported. Failure to support these connections could also result in damage to the air distribution valve body.



CONVERTED EXHAUST ILLUSTRATION

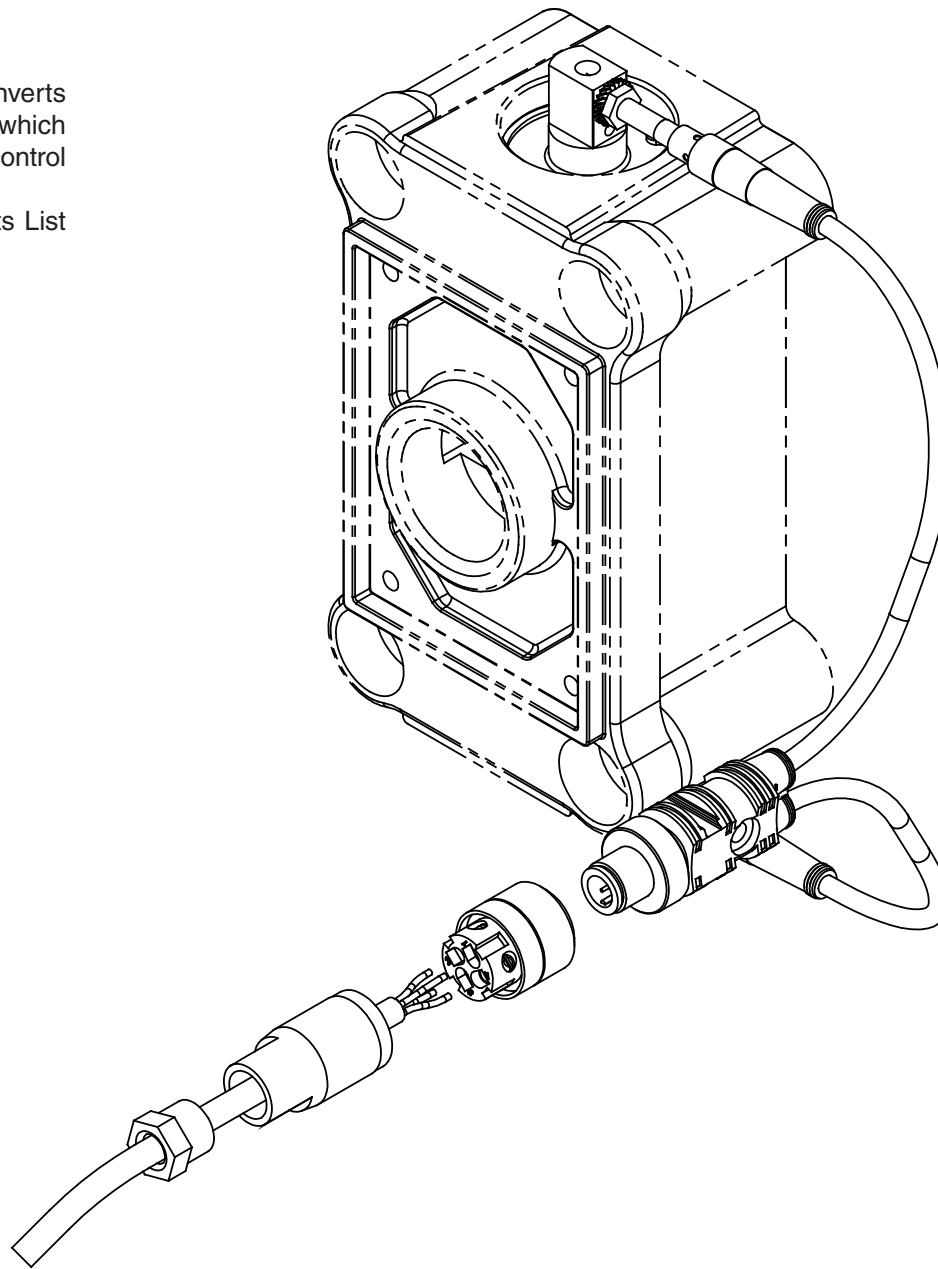


Pulse Output Kit Drawing

PULSE OUTPUT KIT OPTION

This pump can be fitted with a Pulse Output Kit. This converts the mechanical strokes of the pump to an electrical signal which interfaces with the Stroke Counter/ Batch Controller or user control devices such as a PLC.

See the individual kits listed on the Pump Repair Parts List for further information.



Optional Muffler Configurations, Drawing



OPTION 0

530-031-550 Integral Muffler uses (1) Cap and (4) 706-027-115 Machine Screw to hold it in place.

OPTION 1

530-024-000 Sound Dampening Muffler screws directly into the Air Valve body. This muffler is equipped with a porous plastic element.

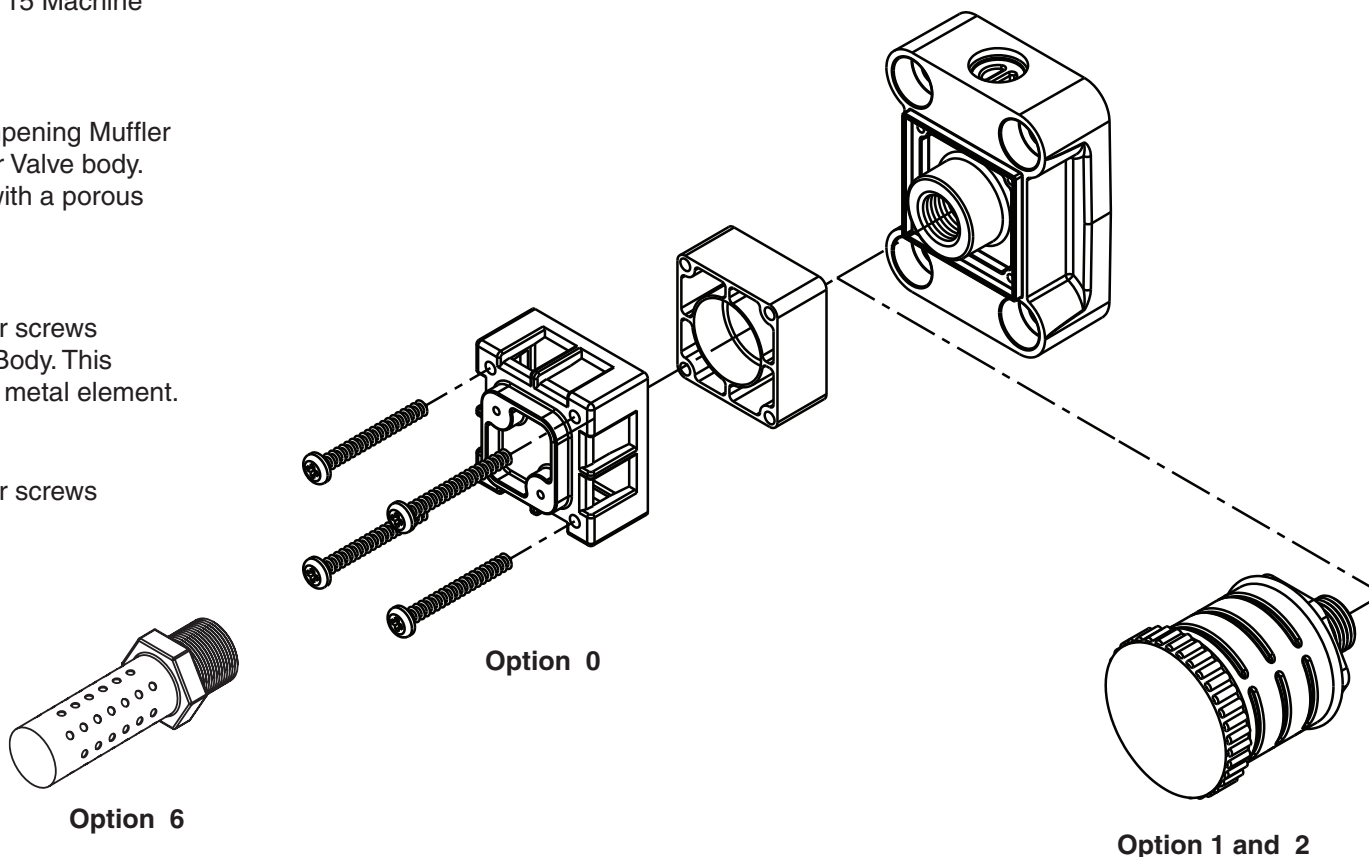
OPTION 2

530-023-000 Mesh Muffler screws directly into the Air Valve Body. This muffler is equipped with a metal element.



OPTION 6

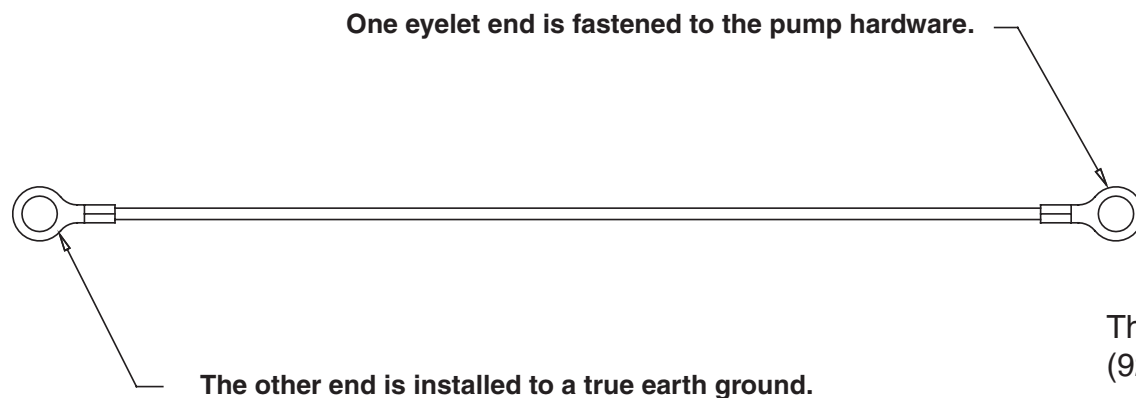
530-035-000 Metal Muffler screws directly into the Air Body.



Note: Pumps are only ATEX compliant when ordered with wetted material options C or V, non-wetted material option C, pump options 0, 6 or 7 and Kit options 00 or P1.

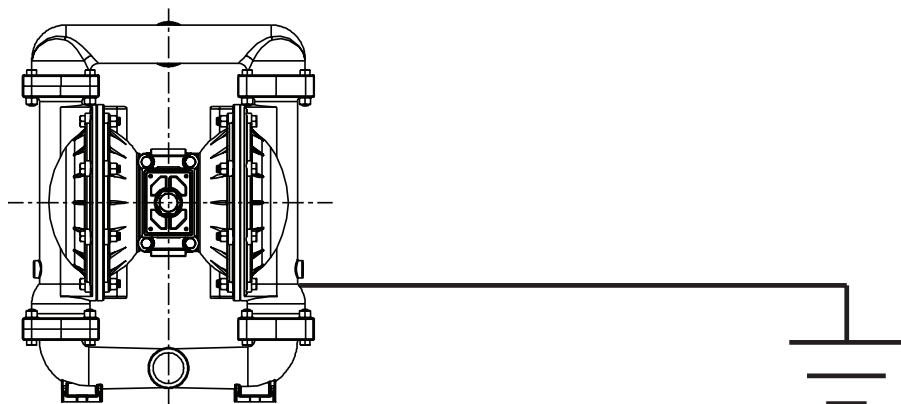
Grounding The Pump

To be fully groundable, the pumps must be ATEX Compliant. Refer to pump data sheet for ordering.



This optional 8 foot long (244 centimeters) Ground Strap (920-025-000) is available for easy ground connection.

To reduce the risk of static electrical sparking, this pump must be grounded. Check the local electrical code for detailed grounding instruction and the type of equipment required.



	<p>! WARNING</p> <p><i>Take action to prevent static sparking. Fire or explosion can result, especially when handling flammable liquids. The pump, piping, valves, containers or other miscellaneous equipment must be grounded.</i></p>
---	---

Declaration of Conformity

**WARREN
RUPP®**

IDEX
FLUID & METERING

Declaration of Conformity

Warren Rupp, Inc., 800 North Main Street, Mansfield, Ohio, certifies that Air-Operated Double Diaphragm Pumps Series: HDB, HDF, M Non-Metallic, S Non-Metallic, M Metallic, S Metallic, Containment Duty, Gas, UL, High Pressure, W, Submersible and Tranquilizers comply with the European Community Directive 98/37/EC, Safety of Machinery. This product has used EN 809, Pumps and Pump Units for Liquids - Common Safety Requirements harmonized standard to verify conformance.

David Roseberry

Signature of authorized person

October 20, 2005

Date of issue

David Roseberry

Printed name of authorized person

Engineering Manager

Title

CE

Declaration of Conformity